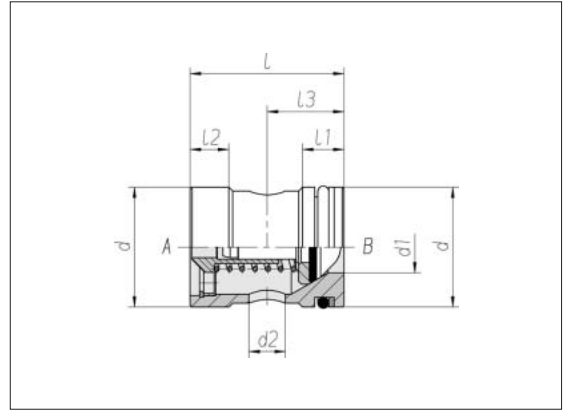


# Non-return valve plug-in cartridges

Flow direction B-A

Opening pressure 1 bar  
(standard design)



Type	Pressure	d	d1	d2	l	l1	l2	l3	kg/100 approx.	Order No.
RVP 13	PB 400	13	4	3	23	8	6	11	1.6	0 6 05 00 20 00*
RVP 16	PB 400	16	6	4.5	26.5	8	7	12	2.7	0 6 05 01 20 00
RVP 20	PB 400	20	8	6	30	9	7	14	4.3	0 6 05 02 20 00
RVP 24	PB 400	24	10	7	35	11	8	17	6.4	0 6 05 03 20 00
RVP 27	PB 400	27	12	8.5	38	11	8	18	8.9	0 6 05 04 20 00
RVP 35	PB 400	35	15	11	44.5	12	9.5	25	18.5	0 6 05 05 20 00
RVP 40	PB 250	40	19	13.5	50.5	12	11	27.5	25.2	0 6 05 06 20 00
RVP 47	PB 250	47	24	17	60	12	13	32	40.4	0 6 05 07 20 00
RVP 55	PB 250	55	30	21.5	70	14	13	42	62.6	0 6 05 08 20 00

\* Sample product code, see:  
RVP13