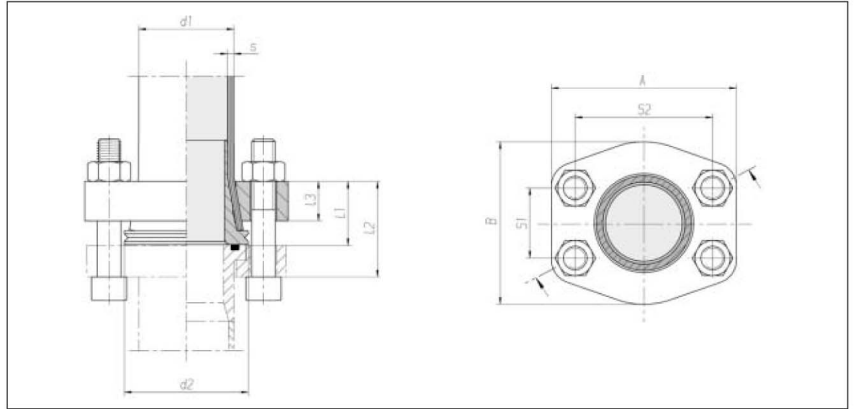


## Tube-to-tube flange couplings ZAKO system Low Pressure

Hole pattern according to  
SAE J 518 C / ISO 6162-1

Max. permissible operating  
pressure (PB) 60 bar



Flange size NW	Tube d1 x s	d2	l1 approx.	l2 approx.	l3	S1	S2	A	B	4 x cheese head screw*	Nm**	kg/100 approx.	Order No.
1 1/2"	48.3 x 3.2	63	31.5	47.5	20	35.7	69.9	94	83	M12 x 70	85	86.0	0 5 18 82 20 00
1 1/2"	48.3 x 4	63	31.5	47.5	20	35.7	69.9	94	83	M12 x 70	85	88.0	0 5 18 83 20 00
2"	60.3 x 3.6	72	39	55	20.5	42.9	77.8	102	97	M12 x 80	85	113.0	0 5 18 84 20 00
2 1/2"	60.3 x 3.6	85	39	58	20.5	50.8	88.9	114	109	M12 x 80	85	161.0	0 5 18 85 20 00
2 1/2"	60.3 x 4.5	85	39	58	20.5	50.8	88.9	114	109	M12 x 80	85	152.0	0 5 18 86 20 00
3"	76.1 x 3.6	100	46	68	27	61.9	106.4	135	131	M16 x 90	210	268.0	0 5 18 87 20 00
3"	76.1 x 4.5	100	46	68	27	61.9	106.4	135	131	M16 x 90	210	229.0	0 5 18 88 20 00
3 1/2"	88.9 x 3.6	114	52	74	27.5	69.9	120.7	152	140	M16 x 110	210	341.0	0 5 18 89 20 00
3 1/2"	88.9 x 5	114	52	74	27.5	69.9	120.7	152	140	M16 x 110	210	347.0	0 5 18 90 20 00
5"	114.3 x 3.6	150	52.5	80.5	27.5	92.1	152.4	184	181	M16 x 110	210	519.0	0 5 18 91 20 00
5"	114.3 x 6.3	150	52.5	80.5	27.5	92.1	152.4	184	181	M16 x 110	210	539.0	0 5 18 92 20 00

\* Screws according to DIN 912,  
property class 8.8

\*\* Recommended tightening torque  
(Nm max.) at friction coefficient  
 $\mu$  total: 0,14