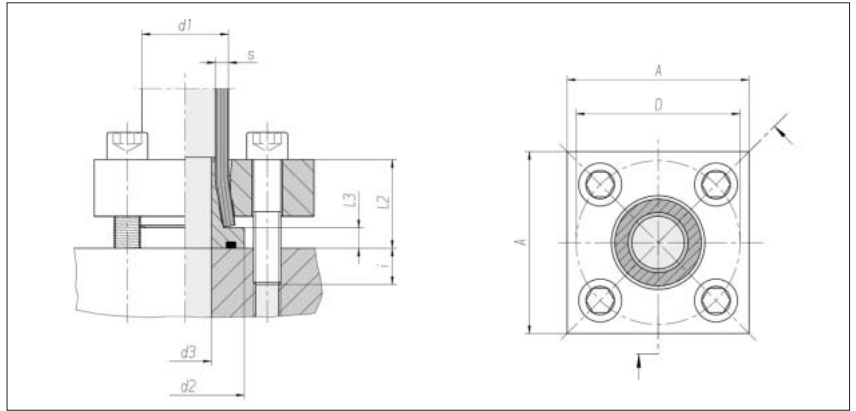


Tube-to-port flange couplings ZAKO system

VOSS square
flange hole pattern
High-pressure series

Max. permissible operating
pressure (PB) 400 bar¹⁾



Flange size NW	Tube d1 x s	d2	d3	l2 approx.	l3	D	A	i approx.	4 x cheese head screw	Nm*	kg/100 approx.	Order No. complete	Order No. ***
12	16 x 2	30	10.5	28	8	42	50	12	M 8 x 40	35	42.2	0 5 15 15 19 00**	0 5 15 15 19 86
11	16 x 2.5	30	9.5	28	8	42	50	12	M 8 x 40	35	42.2	0 5 13 60 19 00	0 5 13 60 19 86
10	16 x 3	30	8.5	28	8	42	50	12	M 8 x 40	35	42.2	0 5 13 61 19 00	0 5 13 61 19 86
15	20 x 2.5	38	13.5	32	8	50	55	13	M 10 x 45	69	55.2	0 5 15 16 19 00	0 5 15 16 19 86
14	20 x 3	38	12.5	32	8	50	55	13	M 10 x 45	69	55.3	0 5 13 62 19 00	0 5 13 62 19 86
13	20 x 3.5	38	11	32	8	50	55	13	M 10 x 45	69	55.6	0 5 13 63 19 00	0 5 13 63 19 86
19	25 x 3	38	17	32.5	8.5	50	55	12.5	M 10 x 45	69	65.4	0 5 13 64 19 00	0 5 13 64 19 86
17	25 x 4	38	15	32.5	8.5	50	55	12.5	M 10 x 45	69	65.8	0 5 13 65 19 00	0 5 13 65 19 86
22	30 x 4	46	20	37.5	8.5	62	65	17.5	M 12 x 55	120	87.3	0 5 13 66 19 00	0 5 13 66 19 86
20	30 x 5	46	17	37.5	8.5	62	65	17.5	M 12 x 55	120	88.1	0 5 13 67 19 00	0 5 13 67 19 86
30	38 x 4	52	28	39	9	72	80	16	M 12 x 55 ¹⁾	120	124.4	0 5 15 17 19 00	0 5 15 17 19 86
28	38 x 5	52	26	39	9	72	80	16	M 12 x 55 ¹⁾	120	124.9	0 5 13 68 19 00	0 5 13 68 19 86
26	38 x 6	52	23	39	9	72	80	16	M 12 x 55 ¹⁾	120	125.1	0 5 13 69 19 00	0 5 13 69 19 86
45	50 x 2.5	63	42	56	10	85	85	19	M 14 x 75	190	197.4	0 5 15 00 19 00	0 5 15 00 19 86
40	50 x 5	63	37	56	10	85	85	19	M 14 x 75	190	197.9	0 5 15 23 19 00	0 5 15 23 19 86
38	50 x 6	63	35	56	10	85	85	19	M 14 x 75	190	197.9	0 5 15 24 19 00	0 5 15 24 19 86
34	50 x 8	63	31	56	10	85	85	19	M 14 x 75	190	201.1	0 5 15 01 19 00	0 5 15 01 19 86
32	50 x 9	63	29	56	10	85	85	19	M 14 x 75	190	201.1	0 5 15 25 19 00	0 5 15 25 19 86

Continuation on page 241

When selecting the tube dimensions, refer to the pressure specifications of the tube manufacturer.

¹⁾ Triple safety

* Recommended tightening torques (Nm max.) at 10.9

** Sample product code, see: FE-1620

*** without screws