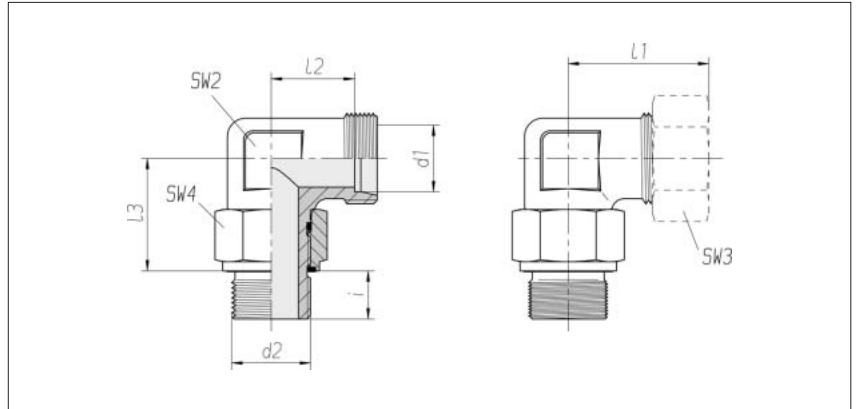


## Adjustable elbow couplings with lock nut

Thread:  
metric fine thread,  
straight

Sealed with PEFLEX seal



Series	Pressure	d2	SW2	SW3	SW4	l1* approx.	l2	l3	i	kg/100 approx.	Order No. Single component	Order No. **
S 6	PN 315	M 12 x 1.5	14	17	17	31.5	16.5	24.5	12	6.9	1 1 13 50 20 81	1 1 13 50 20 XX
S 8	PN 315	M 14 x 1.5	17	19	19	33	18	27	12	9.2	1 1 13 55 20 81	1 1 13 55 20 XX
S 10	PN 315	M 16 x 1.5	17	22	22	38	17.5	28	12	12.2	1 1 13 60 20 81	1 1 13 60 20 XX
S 10	PN 315	M 12 x 1.5	17	22	17	34	17.5	26.5	12	7.9	1 1 13 61 20 81	1 1 13 61 20 XX
S 12	PN 315	M 18 x 1.5	22	24	24	38	21.5	30	12	17.1	1 1 13 65 20 81	1 1 13 65 20 XX
S 16	PN 315	M 22 x 1.5	27	30	27	45	26.5	35.5	14	27.4	1 1 13 75 20 81	1 1 13 75 20 XX
S 20	PN 250	M 27 x 2	27	36	32	49	27.5	40	16	34.3	1 1 13 80 20 81	1 1 13 80 20 XX
S 25	PN 160	M 33 x 2	41	46	41	56	32	50.5	18	76.9	1 1 13 85 20 81	1 1 13 85 20 XX
S 30	PN 160	M 42 x 2	50	50	50	63	36.5	55.5	20	121.4	1 1 13 90 20 81	1 1 13 90 20 XX
S 38	PN 160	M 48 x 2	50	60	55	72	41	57.5	22	133.1	1 1 13 95 20 81	1 1 13 95 20 XX

Supplementary to Order No. for complete fitting tube connection	Supplementary to Order No.
2S	07
ES-4	09
BV-10	Refer to the front page

\* Apply to complete fittings with 2S or ES-4 tube connection components.  
For BV-10 Refer to the front page.

\*\* With union nut and 2S, ES-4 or BV-10 tube connection components