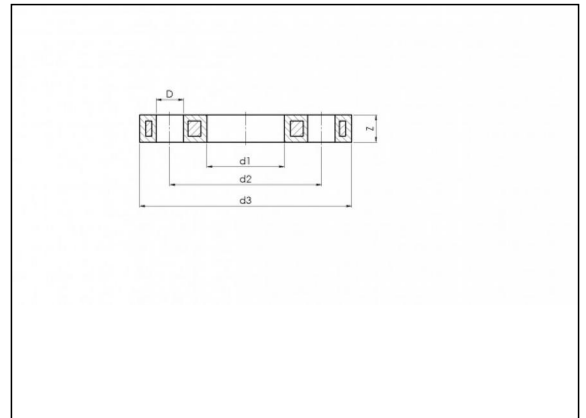


# 9.71 PP Steel flange

## Product information

### Material

- PP-GF = Polypropyleen glasfiber reinforced (30%)



## Available items

ART.CODE	Dia	DN	d1	d2	d3	Z	NxD	PN	Qty
9.71.020	20	15	28	65	95	12	4x14	16	20
9.71.025	25	20	34	75	105	12	4x14	16	20
9.71.032	32	25	42	85	115	16	4x14	16	15
9.71.040	40	32	51	100	140	18	4x18	16	10
9.71.050	50	40	62	110	150	18	4x18	16	10
9.71.063	63	50	78	125	165	18	4x18	16	15
9.71.075	75	65	92	145	185	18	4x18	16	15
9.71.090	90	80	108	160	200	20	8x18	16	10

### Van de Lande BV

Lissenveld 1 \ 4941 VK Raamsdonksveer \ The Netherlands \ t +31 (0)162 51 60 00 \ f +31 (0)162 52 14 17 \ sales@vandelande.com  
 Traderegister Tilburg: 18070844 \ IBAN: NL13 RABO 0143 0035 26 \ BIC: RABONL2U \ VAT: NL 8123.91.755.B01

ART.CODE	Dia	DN	d1	d2	d3	Z	NxD	PN	Qty
9.71.091	90	80	110	160	200	20	8x18	16	10
9.71.110	110	100	128	180	220	20	8x18	16	10
9.71.111	110	100	133	180	220	20	8x18	16	10
9.71.125	125	100	135	180	220	20	8x18	16	10
9.71.126	125	125	150	210	250	24	8x18	16	10
9.71.140	140	125	158	210	250	24	8x18	16	1
9.71.141	140	125	167	210	250	24	8x18	16	1
9.71.160	160	150	178	240	285	24	8x22	16	1
9.71.180	180	150	188	240	285	24	8x22	16	1
9.71.200	200	200	235	295	340	27	8x22	16	1
9.71.225	225	200	238	295	340	27	8x22	16	1
9.71.250	250	250	288	350	395	30	12x2 2	16	1
9.71.280	280	250	294	350	395	30	12x2 2	16	1
9.71.315	315	300	338	400	445	34	12x2 2	16	1
9.71.355	355	350	376	460	515	40	16x2 2	16	1
9.71.400	400	400	430	515	574	40	16x2 2	16	1

**Van de Lande BV**

Lissenveld 1 \ 4941 VK Raamsdonksveer \ The Netherlands \ t +31 (0)162 51 60 00 \ f +31 (0)162 52 14 17 \ sales@vandelande.com  
 Traderegister Tilburg: 18070844 \ IBAN: NL13 RABO 0143 0035 26 \ BIC: RABONL2U \ VAT: NL 8123.91.755.B01

[www.vandelande.com](http://www.vandelande.com)

All our transactions are subject to the Van de Lande General Terms of Sale. A copy of these can be provided immediately upon your request.