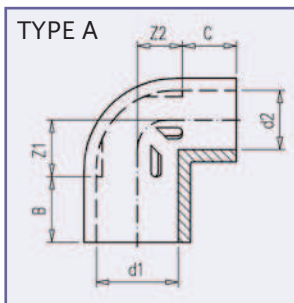
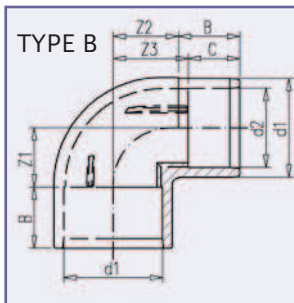


Elbow 90°

Knie 90°
Winkel 90°
Coude 90°
Gomito 90°
Codo 90°



reducing
verlopend
reduzierent
réduisant
ridotto
reducida

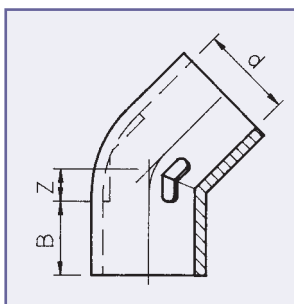


reducing
verlopend
reduzierent
réduisant
ridotto
reducida

Art.code	d ₁	d ₂	Z ₁	Z ₂	Z ₃	B	C	Type	PN	Quantity
2.26.011	40	32	22	22	-	26	22	A	10	200
2.26.021	50	32	28	33	-	31	22	A	10	150
2.26.031	50	40	28	29	-	31	26	A	10	135
2.26.032	50	40	30	33	38	31	26	B	10	100
2.26.042	63	50	45.5	44	50.5	37.5	31	B	10	50

Elbow 45°

Knie 45°
Winkel 45°
Coude 45°
Gomito 45°
Codo 45°



Art.code	d	Z	B	PN	Quantity
2.30.010	10	3	12	16	150 (3x50)
2.30.012*	12	3.5	12	16	150 (3x50)
2.30.016*	16	4.5	14	16	150 (3x50)
2.30.020*	20	5	16	16	150 (3x50)
2.30.025*	25	6	19	16	150
2.30.032*	32	8	22	16	300
2.30.040*	40	10	26	16	150
2.30.050*	50	12	31	16	75
2.30.051	50	12	31	10	100
2.30.063*	63	15	38	16	65
2.30.064	63	15	38	10	70
2.30.075	75	18	44	16	35
2.30.090	90	19.5	51	16	24
2.30.110	110	26	61	16	12
2.30.125	125	26.5	69	16	6
2.30.140	140	30	76	16	6
2.30.160	160	35	86	16	2
2.30.200	200	49	107	10	1
2.30.225	225	54	120	10	1
2.30.250	250	60	132	10	1
2.30.280	280	66	147	10	1
2.30.315	315	74	165	10	1
2.30.400	400	86,5	207	6	1

* = kiwa norm PN 16