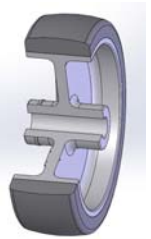


SERIES 38



GREY NON-MARKING THERMOPLASTIC RUBBER WHEELS, POLYPROPYLENE CENTRE SWIVEL BOLT HOLE BRACKETS WITH BRAKE

Wheel description



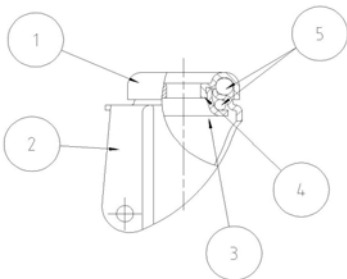
Tread: grey non-marking thermoplastic rubber tread.

Centre: in polypropylene

Hub: the plain bearing bore results from a hole in the material forming the centre of the wheel and contains the axle.

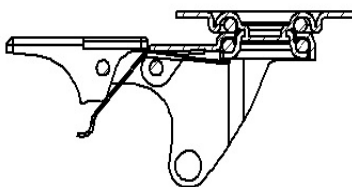
Bracket description

Light duty bracket (max. carrying capacity 70 daN)



- 1) **Plate:** electrolytically galvanised steel plate
 - 2) **Fork:** electrolytically galvanised steel plate
 - 3) **Ball Racing Ring:** electrolytically galvanised steel plate
 - 4) **King Pin:** incorporated in top plate and cold riveted
 - 5) **Swivel actions:** double ring of greased balls
- Finishing:** electrolytic galvanisation
Fitting: bolt hole

Brake description



Front-locking brake

This brake fully locks wheel and castor rotation.
The hardened carbon steel spring has very high corrosion resistance.

