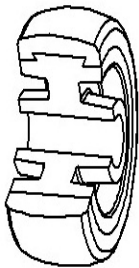


## SERIES 36



### STITUTIONAL INJECTION POLYURETHANE WHEELS POLYAMIDE 6 CENTRE SWIVEL TOP PLATE BRACKET WITH BRAKE

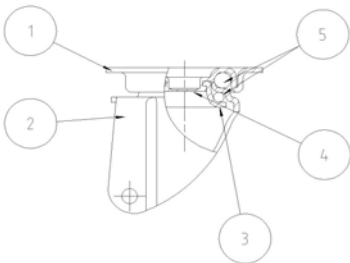
#### Wheel description



- Tread:** injection polyurethane tread.  
**Centre:** polyamide 6.  
**Hub:** the hub is available with plain bearing.

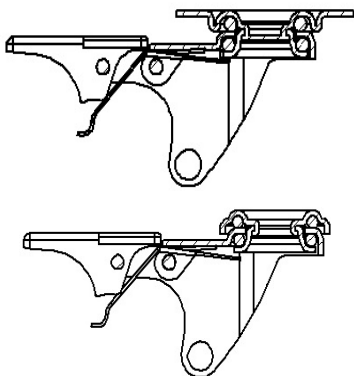
#### Bracket description

Light duty bracket (max. carrying capacity 70 daN)



- 1) **Plate:** electrolytically galvanised steel plate
  - 2) **Fork:** electrolytically galvanised steel plate
  - 3) **Ball Racing Ring:** electrolytically galvanised steel plate
  - 4) **King Pin:** incorporated in top plate and cold riveted
  - 5) **Swivel actions:** double ring of greased balls
- Finishing:** electrolytic galvanisation  
**Fitting:** top plate

#### Brake description



#### Front-locking brake

This brake fully locks wheel and castor rotation.  
The hardened carbon steel spring has very high corrosion resistance.