

SERIES 61



INJECTION POLYURETHANE WHEELS, POLYAMIDE 6 CENTRE, SWIVEL TOP PLATE BRACKET TYPE "NL" WITH BRAKE

Wheel description



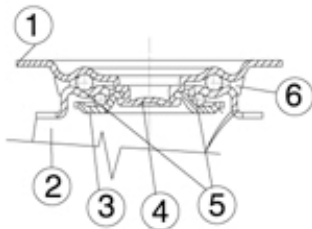
Tread: injection polyurethane tread, hardness 80 Shore A; excellent rolling resistance and elasticity, good resistant to wear and to tearing.

Centre: polyamide 6.

Hub: the hub is available with plain bearing, with roller bearing and with double shielding ball bearing, coprinted in the centre of the wheel.

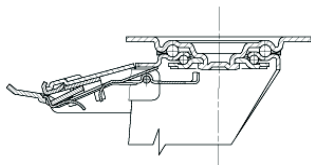
Bracket description

Standard duty bracket type NL (max. carrying capacity 400 daN)

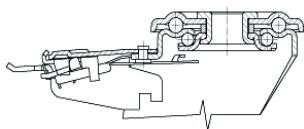


- 1) **Plate:** electrolytically galvanised steel plate
 - 2) **Fork:** electrolytically galvanised steel plate
 - 3) **Ball Racing Ring:** electrolytically galvanised steel plate
 - 4) **King Pin:** incorporated in top plate and cold riveted
 - 5) **Swivel actions:** double ring of greased balls
 - 6) **Dust seal:** orange polyethylene
- Finishing:** electrolytic galvanisation
Fitting: top plate

Brake description



Diameters 80-150 mm



Diameters 150-200 mm

Front-locking brake

This brake fully locks wheel and castor rotation.

Thanks to its optimised dimensions and fold-away pedal, the brake is easy to engage and extremely compact.

The hardened carbon steel spring has very high corrosion resistance.