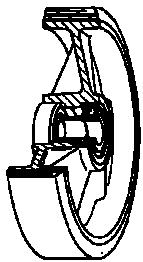


SERIES 61



INJECTION POLYURETHANE WHEELS, POLYAMIDE 6 CENTRE, SWIVEL STEM BRACKET TYPE "NL" WITH BRAKE

Wheel description



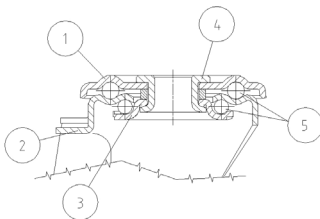
Tread: injection polyurethane tread, hardness 80 Shore A; excellent rolling resistance and elasticity, good resistant to wear and to tearing.

Centre: polyamide 6.

Hub: the hub is available with plain bearing and with roller bearing.

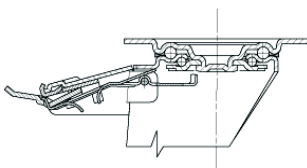
Bracket description

Standard duty bracket type NL (max. carrying capacity 400 daN)



- 1) **Plate:** electrolytically galvanised steel plate
 - 2) **Fork:** electrolytically galvanised steel plate
 - 3) **Ball Racing Ring:** electrolytically galvanised steel plate
 - 4) **King Pin:** incorporated in top plate and cold riveted
 - 5) **Swivel actions:** double ring of greased balls
- Finishing:** electrolytic galvanisation
Fitting: stem

Brake description



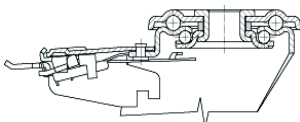
Diam. 80-150 mm

Front-locking brake

This brake fully locks wheel and castor rotation.

Thanks to its optimised dimensions and fold-away pedal, the brake is easy to engage and extremely compact.

The hardened carbon steel spring has very high corrosion resistance.



Diam. 150-200 mm