

## SERIES 60



### INJECTION POLYURETHANE WHEELS, POLYAMIDE 6 CENTRE, SWIVEL BOLT HOLE BRACKET TYPE “NLX”

#### Wheel description



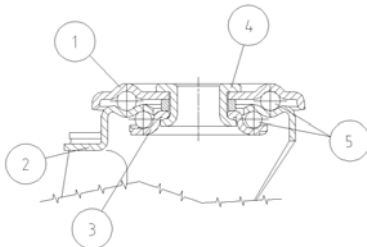
**Tread:** “injection polyurethane tread, hardness 55 Shore D; excellent rolling resistance and elasticity, highly resistant to wear and to tearing.

**Centre:** polyamide 6.

**Hub:** the hub is available with plain bearing, with stainless steel roller bearings and with stainless steel ball bearings.

#### Bracket description

**Standard duty bracket type NLX (max. carrying capacity 400 daN)**



1) **Plate:** AISI 304 stainless steel

2) **Fork:** AISI 304 stainless steel

3) **Ball Racing Ring:** AISI 304 stainless steel

4) **King Pin:** incorporated in top plate and cold riveted

5) **Swivel actions:** double ring of greased balls

**Fitting:** bolt hole