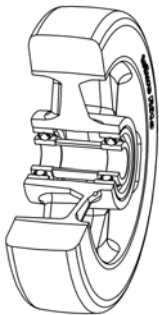




SERIES 65HT

**WHEELS IN THICK “TR” POLYURETHANE,
ALUMINIUM CENTRE,
SWIVEL TOP PLATE BRACKET TYPE EE MHD WITH REAR
ADJUSTABLE BRAKE**

Wheel description



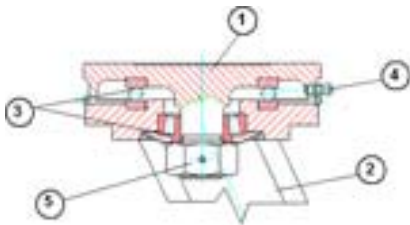
Tread: “TR” polyurethane, hardness 95 Shore A, very thick and rounded profile.

Centre: aluminium.

Hub: the housing is obtained by moulding and contains ball bearings series Z.

Bracket description

EE Medium Heavy Duty bracket (max. load capacity 900 daN)



1) **Plate:** forged steel with integrated pin

2) **Fork:** drawn sides electrowelded to the flange

3) **Swivel actions:** axial ball bearing and taper roller bearing

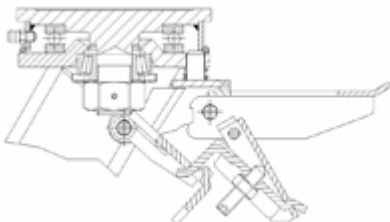
4) **Lubricator**

5) **Nut anti-loosening system**

Finish: electrolytic galvanisation

Fitting: top plate

Brake description



Rear adjustable brake

Double-action brake that locks the wheel and the castor at the same time. The brake is efficient and easy to use: a simple top-to-bottom movement using the tip of the foot on two independent pedals is all that's needed to engage and release the lock quickly and smoothly. Locking force can be adjusted using an M8 socket screw.