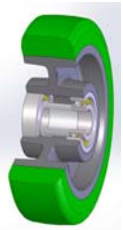


SERIES 62NY



**“TR-ROLL” POLYURETHANE WHEELS, ALSO AVAILABLE WITH ERGONOMIC ROUND PROFILE
CENTER IN POLYAMIDE 6,
FIXED BRACKET TYPE M WITH FRONT LOCKING BRAKE**

Wheel description



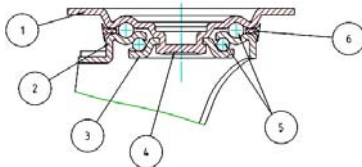
Tread: “TR-ROLL” polyurethane wheels, hardness 75 Shore A, excellent sliding and elasticity, good resistance to wear and tear.

Center: polyamide 6.

Hub: the housing is obtained by moulding and contains ball bearings series Z.

Bracket description

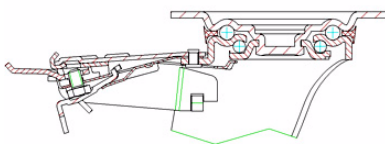
Medium duty bracket type M (max. load capacity 400 daN)



- 1) **Plate:** electrolytically galvanised steel plate
 - 2) **Fork:** electrolytically galvanised steel plate
 - 3) **Ball Racing Ring:** electrolytically galvanised steel plate
 - 4) **King Pin:** incorporated in top plate and cold riveted
 - 5) **Swivel actions:** double ring of greased balls
 - 6) **Dust seal:** blue polyethylene
- Finishing:** electrolytic galvanisation
Fitting: top plate

Brake description

Adjustable front-locking brake



This brake fully locks wheel and castor rotation.

Thanks to its optimised dimensions and fold-away pedal, the brake is easy to engage and extremely compact.

Locking force can be adjusted using an M8 socket screw – 13 mm spanner.