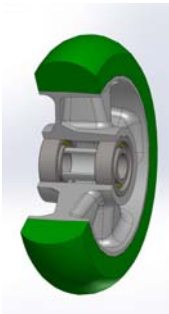


62ER SERIES



“TR-ROLL” POLYURETHANE WHEELS WITH ROUND ERGONOMIC PROFILE ALUMINIUM CENTER

Wheel description



Tread: “TR-Roll” polyurethane, hardness 75 Shore A, excellent rolling resistance and elasticity, good resistance to wear and to tearing.

Center: aluminium

Hub: the housing is obtained by moulding and contains ball bearings series Z.
The hub is available also without bearings.