

## SERIES 34



### GREY POLYAMIDE 6 PAIRED FURNITURE WHEELS STEM FITTING WITH BRAKE

---

#### Wheel description

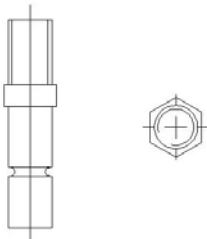


**Tread:** polyamide 6, grey.  
**Hub:** the hub is available with plain bearing.

---

#### Fitting description

**Fitting max. carrying capacity 40 daN**

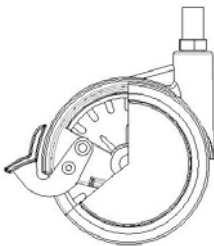


Fitting with stem M 10.

---

#### Brake description

**Front brake, only wheel locking**



---

**Diameters: 60 - 100 mm**