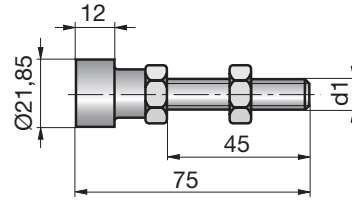
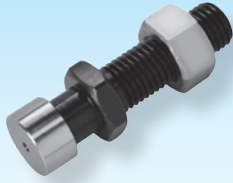


### Stellschrauben

### Adjusting screw

### Vis-pointeau d'arrêt



**Z4152-**

Mat.: 1.7131  
55 +4HRC

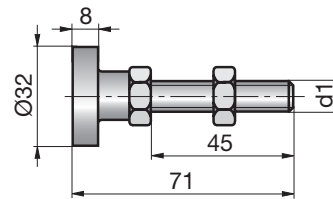
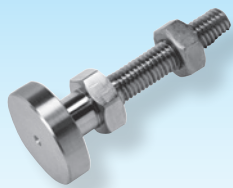
**d1**

M10

M12



Z4152-d1



**Z4154-**

Mat.: ST

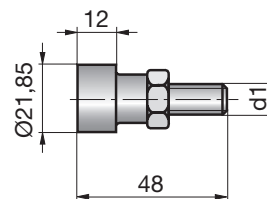
**d1**

M10

M12



Z4154-d1



**Z4155-**

Mat.: 1.7131  
55 +4HRC

**d1**

nach Maschinentyp / onto machine type / après machine type



Z4155-d1

