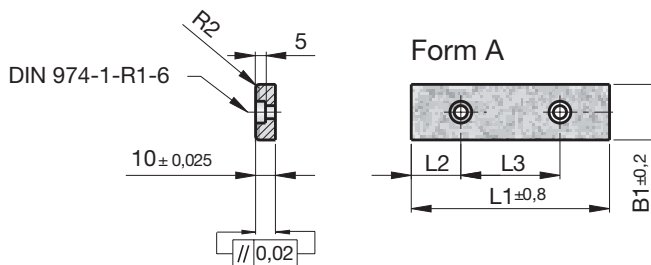


B1	L1	Form	L2	L3	L4	L5	L6	DIN 974 -1-R1-	Bohrungen Drillings Perçages
50	100	F	20	60	-	-	-	8	2
50	150	F	20	55	55	-	-	8	3
50	200	F	20	55	50	55	-	8	4
50	250	F	20	70	70	70	-	8	4
50	300	F	20	65	65	65	65	8	5
50	350	F	20	80	75	75	80	8	5
50	400	F	20	90	90	90	90	8	5
75	150	E	20	110	-	-	-	8	4
75	200	E	20	80	80	-	-	8	6
75	250	E	20	105	105	-	-	8	6
75	300	E	20	85	90	85	-	8	8
75	400	E	20	120	120	120	-	8	8
75	500	E	20	115	115	115	115	8	10

**Flachführungsleisten,
selbstschmierend**

**Flat guide strips,
self-lubricating**

**Barres de guidage plate,
autolubrifiantes**

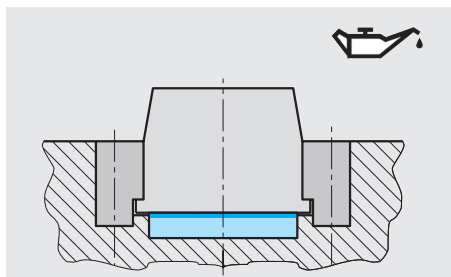


Z3865-

Mat.: SNS Sintermetall/
Sintered metal/Métal
fritté



Z3865-B1-L1



B1	L1	Form	L2	L3	Bohrungen Drillings Perçages
18	75	A	15	45	2
18	150	A	25	100	2
28	150	A	25	100	2
48	75	A	15	45	2
48	100	A	25	50	2
48	125	A	25	75	2
48	150	A	25	100	2