

Cable management

Cable gland



Connector gland

for connector cut-outs (24-pole)

For the entry of 2 pre-assembled cables in the connector cut-out, without dismantling the connector.

Cable diameter: 8 – 36 mm

Material:

- Housing: Plastic
- Clamps: Sheet steel

Surface finish:

- Clamps: Zinc-plated

Supply includes:

- 1 pc(s). =
- 2 half-shells, including seals, with fastening clamp

Packs of	Model No.
1 pc(s).	2400.000



Cable gland

for IW worktops

To fit drilled holes \varnothing 60 mm. For the entry of cables with pre-assembled connectors, the rotating flap and cover are easily removed.

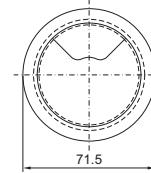
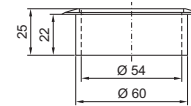
Material:

- Plastic

Colour:

- RAL 7035

Packs of	Model No.
1 pc(s).	6902.770



Edge protection

For covering sharp edges of cut-outs. Provides protection from injuries and prevents damage to inserted cables. The edge protector is suitable for material thicknesses of approx. 1.0 – 2.0 mm, and may be cut to length individually.

Material:

- Plastic PVC

Colour:

- Black

Packs of	Model No.
10 m	7072.100