

Interior installation

Assembly components

Bracket/spacer

For the attachment of C rails, punched rails or cable clamp rails (angle section). On the sides, to accommodate square sections or cable tubes (Ø 20 mm). Attachment points with M8 thread.

Installation options:

- On the vertical TS, SE enclosure section via
 - Snap-on nut 8800.808, see page 618 or
 - Adaptor rail for PS compatibility, see page 610
- On the horizontal TS enclosure section
- On the horizontal SE enclosure section, bottom
- On the horizontal SE enclosure section, top in the depth
- On enclosures and rails with rectangular system punching 12.5 x 10.5 mm

Packs of	Model No.
6 set(s)	4199.000

Material:

- Die-cast zinc

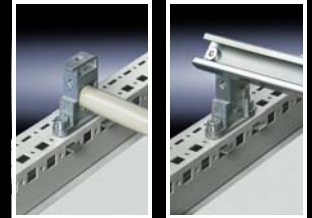
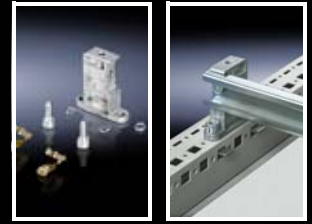
Supply includes:

- 1 set =
 - 1 bracket or spacer,
 - 2 screws M8 x 16 mm,
 - 2 spring lock washers,
 - 2 captive nuts M8,
 - 2 serrated lock washers,
 - 2 screws



Accessories:

- Angle piece 4134.000, see page 621



Quick-assembly block

For a variety of installation options.

Installation options:

- On the vertical TS, SE enclosure section via
 - Snap-on nut 8800.808, see page 618 or
 - Adaptor rail for PS compatibility, see page 610
- On the horizontal TS enclosure section
- On the horizontal SE enclosure section, bottom
- On the horizontal SE enclosure section, top in the depth
- On enclosures and rails with rectangular system punching 12.5 x 10.5 mm

Packs of	Model No.
12 pc(s).	4133.000

Material:

- Die-cast zinc

Supply includes:

- 12 quick-assembly blocks
- 12 threaded blocks M8
- 24 screws M8 x 12 mm
- 24 square nuts M8



Angle piece

For assembling punched rails and mounting surfaces with a 45° incline.

Installation options:

- On the vertical TS, SE enclosure section via
 - Snap-on nut 8800.806, see page 618 or
 - Adaptor rail for PS compatibility, see page 610
- On the horizontal TS enclosure section
- On the horizontal SE enclosure section, bottom
- On the horizontal SE enclosure section, top in the depth
- On enclosures and rails with rectangular system punching 12.5 x 10.5 mm

Packs of	Model No.
12 set(s)	4134.000

Material:

- Angle pieces: Die-cast zinc
- Insulating pieces: Plastic

Supply includes:

- 1 set =
 - 1 angle piece,
 - 1 insulating piece,
 - 1 insulating screw,
 - 2 assembly screws,
 - 1 threaded block M6

