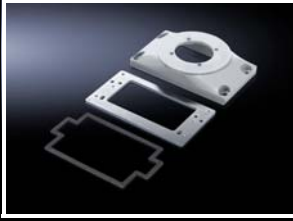


# Support arm system CP 40/60/120/180



## Connection plates

### with reinforcement plate

- For easy location of the command panel onto the support arm or pedestal.
- More space for cable entry

For mounting command panels

- Comfort Panel from a front panel width of 247 mm and installation depth of 152 mm
- Optipanel from a front panel width of 220 mm and installation depth of 150 mm
- Sheet steel from 135 mm installation depth

For mounting on support arm system components

- Mounting bracket CP 60/120 for support arm connection Ø 130 mm, 6206.320, 6212.320
- Coupling CP 60/120 for support arm connection Ø 130 mm, 6206.300, 6212.300
- Angle coupling 90° CP 60/120 for support arm connection Ø 130 mm, 6206.380, 6212.380
- Tilting adaptor 10° CP 60/120 for support arm connection Ø 130 mm, 6206.400
- Tilting adaptor +/-45°, system 60/120 for support arm connection Ø 130 mm, 6206.420

| Weight kg | Model No. |
|-----------|-----------|
| 1.4       | 6212.540  |

### Material:

- Connection plate: Cast aluminium
- Reinforcement plate: Sheet steel, 6 mm

### Colour:

- RAL 7035

### Supply includes:

- Reinforcement plate
- Seals
- Assembly parts

### Technical details:

Available on the Internet



## Angle adaptor 90°

### for support arm combination CP 60 to CP 40

### Application:

- Connection component from CP 60 horizontal to CP 40 vertical
- For external mounting of small, slimline operating housings with CP 40 components, if the greater load capacity of CP 60 is needed for large jib lengths or if an intermediate hinge is required for the application.

### Benefits:

- With integral adjustment facility
- Removable cover for simple cable entry

### Material:

- Angle adaptor 90°: Cast aluminium
- Cover: Plastic

### Colour:

- Angle adaptor 90°: RAL 7035
- Cover: RAL 7024

### Supply includes:

- Seals
- Adjusting screws
- Self-tapping screws and clamping screws for support section attachment

| Weight kg | Model No. |
|-----------|-----------|
| 1.0       | 6206.640  |



### Accessories:

- Mounting component for signal pillars (6206.900), for external mounting on the cover, see page 720

### Technical details:

Available on the Internet

