

# Support arm system CP-L

## Aluminium

1.4 Support arm system CP-L



### Tilting adaptor, 10°CP-L

for support arm connection  $\square 120 \times 65$  mm

For mounting between:

- Housing coupling CP-L (CP 6525.1X0)
- or
- Enclosure attachment CP-L (CP 6525.6X0)
- or
- Housing coupling CP-S (CP 6501.130) and the Command Panel.

**Material:**

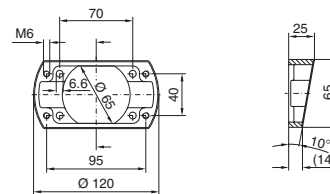
Die-cast zinc

**Supply includes:**

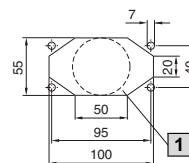
Seal and assembly parts.



Colour RAL	Weight kg	Model No. CP
7030	0.4	6527.100
7024	0.4	6527.110



Mounting cut-out  
Enclosure CP-L  $\square 120 \times 65$  mm



1 Alternative max.  $\varnothing 55$  mm



### Enclosure attachment, tilting

Assembly,  
see page 243.



### Enclosure attachment CP-L

for support arm connection  $\varnothing 130$  mm

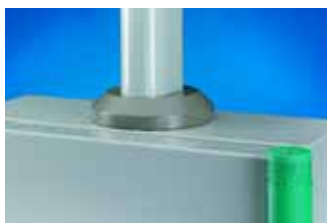
For rigid fastening of the enclosure to the support arm system.

**Material:**

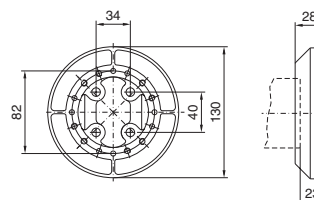
Die-cast zinc

**Supply includes:**

Seals and self-tapping screws for CP-L support section attachment.



Colour RAL	Weight kg	Model No. CP
7030	1.0	6525.500
7024	1.0	6525.510



Mounting cut-out  
Enclosure CP-L,  $\varnothing 130$  mm

