



### Spacer panel and built-in trim panel

#### for VIP 6000 and Optipanel

For additional space with cable entry and for installing

- Switches/indicator lamps
- Emergency-off switches/key switches
- CD-ROM/disk drives
- Interfaces
- etc.



For mounting (horizontally or vertically) on the enclosure, snap into position and screw-fasten from behind.

Other spacer panels and built-in trim panels, front panels and operator panels may be installed without an additional cross member.

#### Material:

Extruded aluminium section, natural-anodised

#### Supply includes:

Assembly parts and end trim (VIP 6000), spacer trim (Optipanel).



#### For VIP 6000

For front panel width mm	Model No. CP <sup>2)</sup>
482.6 (19")	<b>6015.300</b>
As specified <sup>1)</sup>	<b>6015.309</b>

Height corresponding to a front panel height of 103 mm.

<sup>1)</sup>Please specify width of front panel.

<sup>2)</sup>Trim colour see page 219.

Please state on the order.

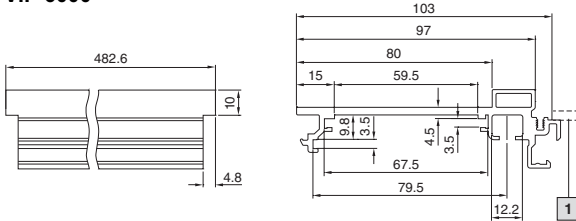
#### For Optipanel

Front panel width mm	Model No. CP
482.6 (19")	<b>6386.300</b>
As specified <sup>1)</sup>	<b>6386.309</b>

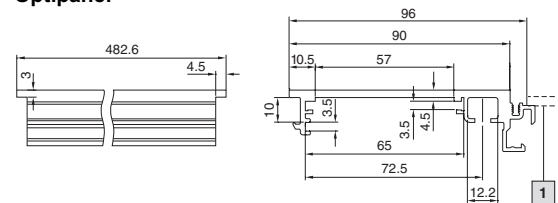
Height corresponding to a front panel height of 96 mm.

<sup>1)</sup>Please specify width of front panel.

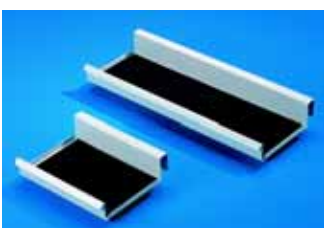
#### VIP 6000



#### Optipanel



**1** Other spacer panels and built-in trim panels, front panel or operator panel



### Utility shelf

#### screw-fastened

With support mat for: Measuring tools, writing equipment, mouse, scanner, small parts etc.

For mounting

- Underneath:
  - Comfort Panel
  - VIP 6000
  - Optipanel
  - Command Panel housing with door
  - Operating housing
  - IW worktop
- For visual reasons, not drilled for assembly.
- On surfaces (doors, rear panels) via rear assembly holes
- To TS punched section with mounting flange 17 x 73 mm, locatable, without screw fastening,
  - For servicing work on the enclosure.

#### Material:

Sheet steel

#### Colour:

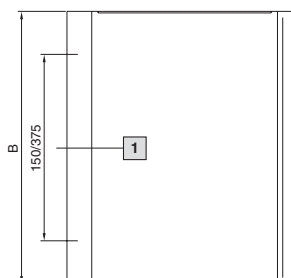
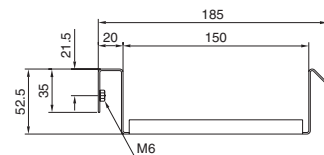
RAL 7035

#### Supply includes:

Assembly parts.



Width (B) mm	Model No. CP
220	<b>6514.110</b>
450	<b>6514.100</b>



**1** Additional central thread only for CP 6514.100