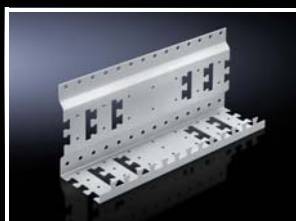


482.6 mm (19") installation system

482.6 mm (19") installation



Support

for small appliances

For secure attachment of small, non-482.6 mm (19")-conforming equipment such as modems, power packs, routers etc. Angle-shaped support for mounting in the empty space at the side between the 482.6 mm (19") level and the side panel on L-mounting angles, mounting frames or chassis. Attachment of the components and connection cables can be achieved quickly and easily using nylon loop tape or cable ties. Also suitable for cable routing in the enclosure depth.

Material:

- Sheet steel

Surface finish:

- Zinc-plated

Supply includes:

- Assembly parts

W x H x D mm	Packs of	Model No.
350 x 150 x 97	1 pc(s).	7246.500

+ Accessories:

- Nylon loop, see page 667
- Cable ties, see page 667

Captive nuts M5/M6

For the attachment of rack-mounted electronic equipment, 482.6 mm (19") installed equipment and blanking plates to mounting angles, 482.6 mm (19"). For use with metal thicknesses from 0.8 – 2.0 mm. In areas of narrow tolerance, the captive nuts for metal thicknesses of 1.2 – 1.5 mm should be used. Optionally with or without contact of the installed equipment to the 482.6 mm (19") section/enclosure.

Captive nut M5

Version	For metal thicknesses mm	Packs of	Model No.
With contact	0.8 – 2.0	50 pc(s).	2094.500
Without contact	0.8 – 2.0	50 pc(s).	2092.500

Captive nut M6

Version	For metal thicknesses mm	Packs of	Model No.
With contact	0.8 – 2.0	50 pc(s).	2094.200
Without contact	0.8 – 2.0	50 pc(s).	2092.200
With contact	1.2 – 1.5	50 pc(s).	2094.300
Without contact	1.2 – 1.5	50 pc(s).	2092.300

Multi-tooth screws

M5 x 16 mm/M6 x 16 mm

For optimum transmission of torques, an extended tool life and increased safety and reliability when tightening and loosening screw connections.

Supply includes:

- Plastic washers

	Bit size	Packs of	Model No.
M5	Multi-tooth 25	50 pc(s).	7094.130
M6	Multi-tooth 30	50 pc(s).	7094.140