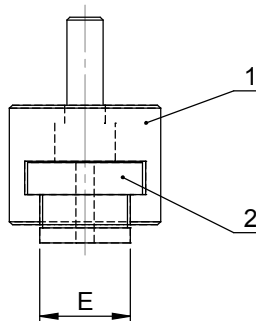
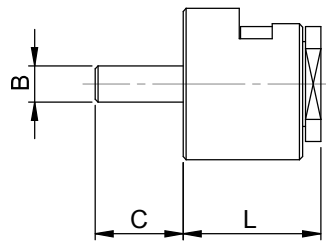
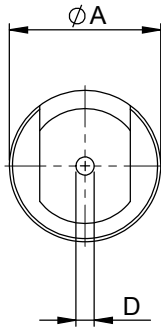


3.3.3 Coupling unit • Dimension sheet

The coupling unit is a coupling for tension and compression, and connects the gear rack to an air or electric cylinder. The unit consists of two parts:

The **coupling sleeve** (1) is screwed to the gear rack, and the **coupling nut** (2) is threaded onto the piston rod of the cylinder. Various thread sizes are available to match the mating threads.





Coupling nuts with special threads are available. They are not included in the table.

Always add the thread size "M = __ x __. __" to the article number.

Coupling unit for lifgo® & lean SL®	Unit	5.0	5.1	5.3	
A	mm	Ø 50	Ø 50	Ø 65	
B	mm	M10	M12	M20	
C	mm	27	29	33,5	
Thread	D	mm	as per customer data		
Width across flats	E	mm	SW 30	SW 30	SW 36
	L	mm	45,5	45,5	78
Dynamic tensile force	F _{max} dyn.	KN	10	12	40
Static tensile force	F _{max} stat.	KN	16	18	63
Weight		kg	0,58	0,58	1,65

Article number	lifgo® & lean SL®	5.0	5.1	5.3
Coupling unit		500 193	500 194	500 195
	Thread	M10 x 1,25	M10 x 1,25	M20 x 1,50
	Thread	M12 x 1,25	M12 x 1,25	M22 x 1,50
	Thread	M16 x 1,50	M16 x 1,50	M27 x 2,00
	Thread	M20 x 1,50	M20 x 1,50	M30 x 2,00