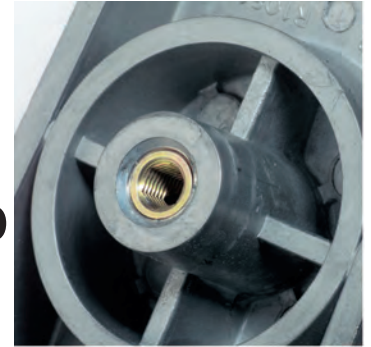




The Ensats® – pull-out resistance due to flange cover ...



Connections using threaded insert Ensats® permit substantially smaller dimensions and consequently material and weight-saving designs.

The illustration below (Fig. 2) shows a screw connection with different screw cross-sections. Despite the smaller

screw cross-section, a screw joint with an Ensats® is capable of withstanding higher axial forces than the screw joint with larger screw cross-section; because the force – both under static and dynamic load – in the Ensats® male thread is distributed evenly over the individual thread turns of the Ensats® male thread.

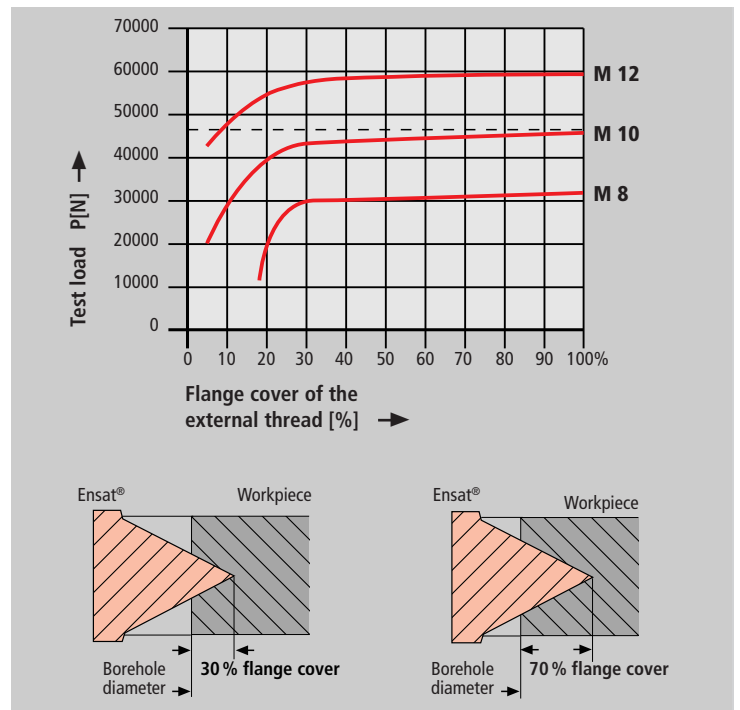


Fig. 3

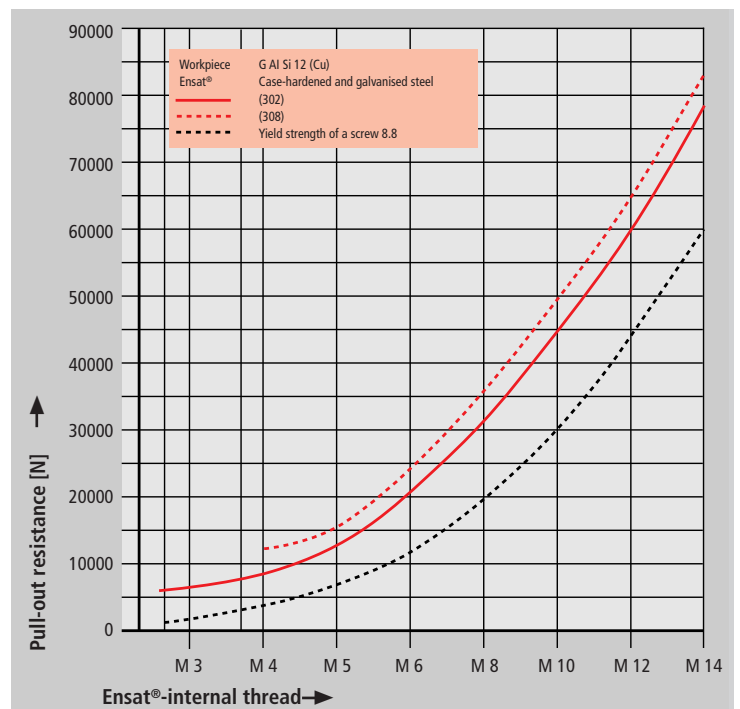


Fig. 4

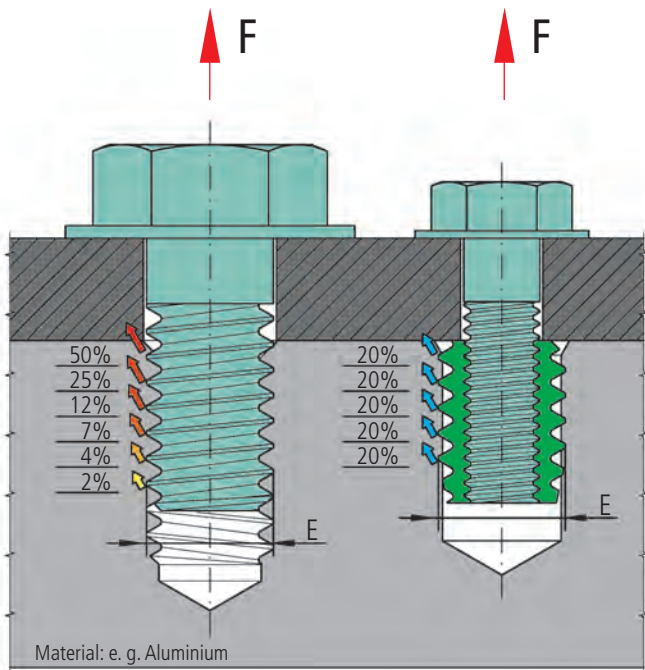


Fig. 2

Flange cover

In a workpiece made of a light alloy, the Ensats® 302 achieves almost maximum pull-out strength with only 30% flange cover (Fig. 3).

Pull-out strength

The Ensats® is capable of withstanding high loads. When used in light alloys, for example, a degree of pull-out strength is achieved which far exceeds the yield strength of the mating screw 8.8 (Fig. 4).





Threaded insert
Self-tapping with chip reservoirs
and closed floor

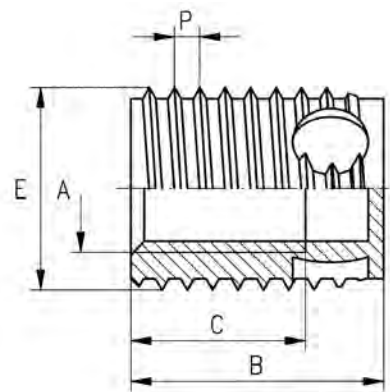
Ensat®-SBT
Works Standard
357 0 and 358 0

Application

This special Ensat®-SBT was developed primarily for applications in which chips – created by self-tapping process – exert a detrimental effect and could cause serious damage or failure during subsequent operation of the installed assembly – for example in electronic equipment.

The chips created during the installation process are stored in these reservoirs and cannot drop into sensitive equipment components.

The closed floor additionally prevents the penetration of chips into the female thread.



The three cutting bores distributed as chip reservoirs.

Dimensions in mm

Article number	Internal thread	External thread Special thread		Length	Thread depth min.	Borehole diameter guideline value	Minimum borehole depth for blind holes
	A	E	P	B	C	L -0,1	T
357 000 040 ...	M 4	6,5	0,8	6	3,2	6,2	8
358 000 040 ...	M 4	6,5	0,8	8	4,5	6,2	10
357 000 050 ...	M 5	8	1	7	4	7,7	9
358 000 050 ...	M 5	8	1	10	6	7,7	13
357 000 060 ...	M 6	10	1,25	8	4,8	9,6	10
358 000 060 ...	M 6	10	1,25	12	7	9,6	15
358 000 080 ...	M 8	12	1,5	14	8,8	11,5	17
358 000 100 ...	M 10	14	1,5	18	11	13,5	22
358 000 120 ...	M 12	16	1,75	22	14	15,4	26

Example for finding the article number

Self-tapping threaded insert Ensat®-SBT with chip reservoir and closed floor, to Works Standard 357 0 with internal thread A = M5 made of case-hardened, zinc plated and blue passivated steel: Ensat®-SBT 357 000 050.110

**Short design
Long design**

Works Standard 357
Works Standard 358

Materials

Case-hardened steel, zinc plated, blue passivated
Case-hardened steel, zinc-nickel plated, transparent passivated
Stainless steel 1.4305 (M4 to M8)
Brass

Article no. (**fourth** group of digits) ... 110
Article no. (**fourth** group of digits) ... 143
Article no. (**fourth** group of digits) ... 500
Article no. (**fourth** group of digits) ... 800

Other materials, designs (e. g. fine thread) and finishes on request.

Tolerance

ISO 2768-m

Thread

Internal thread A: as per ISO 6H
External thread E: Special thread with flattened thread root, as per KKV standard
Internal thread UNC, UNF, Whitworth on request