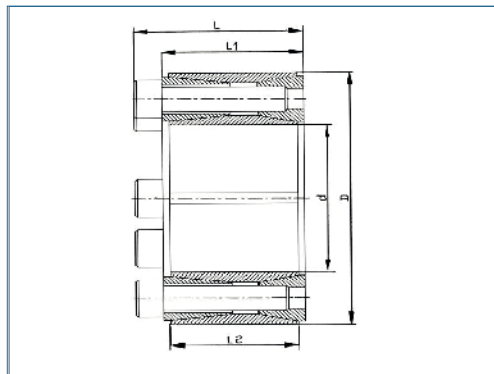


Spannsatz

optional
chem. vernickelt
optional komplett
in Edelstahl



| | |
|--|--------|
| + übertragbares Drehmoment | hoch |
| Flächenpressung auf der Nabe | mittel |
| selbstzentrierend | ja |
| Axialverschiebung der Nabe während der Montage | keine |
| Bauhöhe D/d | hoch |
| Baulänge | lang |

Bestellbeispiel

KBS 10 - 45 x 85

Typ Ød ØD

Die empfohlenen Bearbeitungstoleranzen für die Druckflächen sind: Welle h8 / Nabe H8

| Innen / Außen ø dxD | Drehmoment T Nm | Abmessungen | | | Flächenpressung an | | Spannschrauben | | | Gewicht kg |
|---------------------|-----------------|-------------|--------|--------|--------------------|---------------|----------------|----------|-------|------------|
| | | L mm | L 1 mm | L 2 mm | Welle Pw N/mm² | Nabe Pn N/mm² | St. | ISO 4762 | TA Nm | |
| 45 x 85 | 3140 | 60 | 50 | 44 | 278 | 148 | 8 | M10x45 | 84 | 1.4 |
| 50 x 90 | 3470 | 60 | 50 | 44 | 253 | 141 | 8 | M10x45 | 84 | 1.5 |
| 55 x 95 | 3800 | 60 | 50 | 44 | 223 | 130 | 8 | M10x45 | 84 | 1.6 |
| 60 x 100 | 4130 | 60 | 50 | 44 | 208 | 125 | 8 | M10x45 | 84 | 1.7 |
| 65 x 115 | 6520 | 74 | 62 | 56 | 230 | 130 | 8 | M12x55 | 145 | 3.1 |
| 70 x 120 | 7000 | 74 | 62 | 56 | 205 | 120 | 8 | M12x55 | 145 | 3.3 |
| 80 x 130 | 11900 | 74 | 62 | 56 | 269 | 165 | 12 | M12x55 | 145 | 3.7 |
| 90 x 140 | 13300 | 74 | 62 | 56 | 240 | 154 | 12 | M12x55 | 145 | 4.0 |
| 100 x 160 | 20100 | 94 | 80 | 74 | 217 | 136 | 12 | M14x70 | 235 | 7.2 |
| 110 x 170 | 25400 | 94 | 80 | 74 | 231 | 154 | 14 | M14x70 | 235 | 7.7 |
| 120 x 180 | 29600 | 94 | 80 | 74 | 227 | 151 | 15 | M14x70 | 235 | 8.3 |
| 130 x 190 | 34000 | 94 | 80 | 74 | 223 | 153 | 16 | M14x70 | 235 | 8.8 |
| 140 x 200 | 38800 | 94 | 80 | 74 | 219 | 153 | 17 | M14x70 | 235 | 9.3 |
| 150 x 210 | 43900 | 94 | 80 | 74 | 217 | 155 | 18 | M14x70 | 235 | 10.0 |
| 160 x 230 | 61400 | 110 | 94 | 88 | 218 | 152 | 17 | M16x80 | 365 | 14.9 |
| 170 x 240 | 68900 | 110 | 94 | 88 | 217 | 154 | 18 | M16x80 | 365 | 15.7 |
| 180 x 250 | 80300 | 110 | 94 | 88 | 227 | 164 | 20 | M16x80 | 365 | 16.4 |
| 190 x 260 | 89500 | 110 | 94 | 88 | 227 | 166 | 21 | M16x80 | 365 | 17.2 |
| 200 x 270 | 102000 | 110 | 94 | 88 | 235 | 174 | 23 | M16x80 | 365 | 18.8 |
| 220 x 300 | 126000 | 134 | 116 | 110 | 194 | 142 | 21 | M18x100 | 500 | 27.7 |
| 240 x 320 | 157000 | 134 | 116 | 110 | 203 | 152 | 24 | M18x100 | 500 | 29.8 |
| 260 x 340 | 184000 | 134 | 116 | 110 | 203 | 155 | 26 | M18x100 | 500 | 32.0 |
| 280 x 370 | 236000 | 156 | 136 | 130 | 197 | 149 | 24 | M20x120 | 710 | 46.0 |
| 300 x 390 | 249000 | 156 | 136 | 130 | 182 | 140 | 24 | M20x120 | 710 | 49.0 |