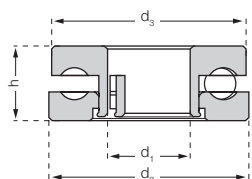


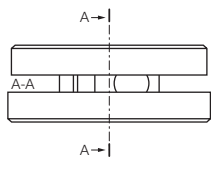
Races made from xirodur® B180

Stainless steel balls  
or glass ballsDouble row,  
stainless steel balls  
or glass balls

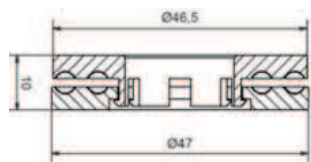
- Suitable for absorbing axial forces



Single row bearing



Double row bearing



## Technical data

Size	Double row	Bearing load		Max. speed	Weight	
		stat.	dyn.		ES	GL
		[N]	[N]	[rpm]	[g]	[g]
51100		200	250	600	6.9	4.4
51104		650	810	460	14.0	8.0
51104	●	975	1,215	460	28.0	17.0

## Dimensions [mm]

Inner Ø	Outer Ø	Width	Height	Cage/ball material combination		Part No.
				B180/ES	B180/GL	
d1	d2	d3	h			
10	24	23.5	9	●	●	BB-51100-B180-□
20	35	34.5	10	●	●	BB-51104-B180-□
20	47	46.5	10	●	●	BB-51104-B180-□-D



## Order example:

BB-51100-B180-ES = axial ball bearing with B180 cage and stainless steel balls



## Order key

Type xirodur® Options

BB-51100-B180-ES-D

Ball bearing	Dimensions acc. to DIN 711	Race/cage material	Ball material	Double row
--------------	----------------------------	--------------------	---------------	------------

## Options:

## Ball material

ES = stainless steel

GL = glass

Races made from xirodur® B180



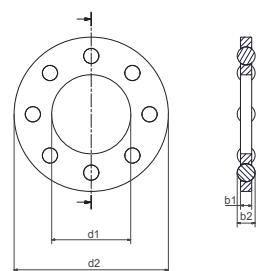
Stainless steel balls



Glass balls



- Small mounting height
- Cost effective



## Technical data and dimensions – related to metallic shafts [mm]

Size	Slim line	Recommended load capacity		Max. speed	Weight	
		stat.	dyn.		ES	GL
		[N]	[N]	[rpm]	[g]	[g]
626		341	425	2,000	1.2	0.9
608		482	600	1,700	1.3	1.0
6000		610	782	1,500	2.4	1.5
6000	●	405	500	1,500	2.2	1.3
6004		975	1,215	700	7.7	4.9
6006		925	1,540	600	7.5	4.7
6006	●	520	680	600	7.2	4.4

Inner Ø	Outer Ø	Width		Race/ball material combination		Part No.
		Standard	Slim line	B180/ES	B180/GL	
d1	d2	b1	b1			
6.2	18.8	3.18	–	●	●	BB-626TW-B180-□
8.2	21.8	3.97	–	●	●	BB-608TW-B180-□
10.2	25.8	4.76	3.97	●	●	BB-6000TW-B180-□
10.2	25.8	3.97	–	●	●	BB-6000TW-B180-□-SL
21	41	4.76	–	●	●	BB-6004TW-B180-□
29.9	45.5	4.76	3.97	●	●	BB-6006TW-B180-□
29.9	45.5	4.76	–	●	●	BB-6006TW-B180-□-SL



## Order example:

BB-6000TW-B180-ES-SL = thrust washer with stainless steel balls, slim line version