



KST...

mm/inch
Pillow Block BearingsPhone +49 - 22 03 - 96 49-145
Fax +49 - 22 03 - 96 49-334igus® GmbH
51147 CologneInternet www.igus.de
E-mail info@igus.de

53.4



Special Properties

- Maintenance-free, self-lubricating
- High strength under impact loads
- High tensile strength for varying loads
- Compensation for alignment errors
- Compensation for edge loads
- Resistant to corrosion
- Chemical resistant
- High vibration dampening capacity
- Suitable for rotating, oscillating and linear movements
- Light weight



Material

Housing: igumid G

► Page 70.6

Spherical Bearing:

iglidur® W300

► Chapter 5

Load Data

igubal® – Pillow Block Bearing KSTM

Part Number	Maximum Static Tensile Strength	Maximum Static Tensile Strength	Maximum Static axial Compressive Strength	Maximum Torque for Longitudinal holes
	Short term [N]	Long term [N]	[N]	[Nm]
KSTM-05	700	350	300	0,6
KSTM-06	1100	550	300	1,3
KSTM-08	1300	650	400	1,3
KSTM-10	1500	750	500	2,5
KSTM-12	2200	1100	600	2,5
KSTM-14	2400	1200	600	4,5
KSTM-16	3000	1500	1000	4,5
KSTM-18	3500	1750	1200	10,5
KSTM-20	4700	2350	1300	10,5
KSTM-22	6100	3050	1400	10,5
KSTM-25	6600	3300	1600	10,5
KSTM-30	8100	4050	2100	21,5

Load Data

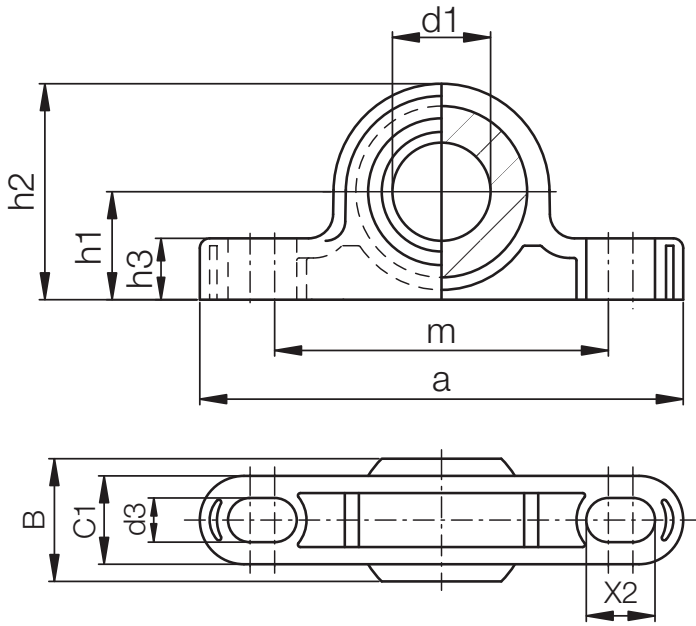
igubal® – Pillow Block Bearing KSTI

Part Number	Maximum Static Tensile Strength	Maximum Static Tensile Strength	Maximum Static axial Strength	Maximum Torque Longitudinal holes
	Short term [N]	Long term [N]	[N]	[Nm]
KSTI-03	550	275	300	0,6
KSTI-04	600	300	300	0,6
KSTI-05	800	400	400	0,8
KSTI-06	1000	500	500	1,3
KSTI-07	1100	550	600	2,5
KSTI-08	1200	600	600	2,5
KSTI-10	2100	1050	800	2,5
KSTI-12	3100	1550	1200	4,5
KSTI-16	5400	2700	1600	10,5

The maximum torques for longitudinal holes correspond to the permissible torque of the fixing screws (fixing category 5.8).

Available from stock

Lifetime calculation, CAD files and much more support ► www.igus.de/en/kstm



Data in mm

Structure – part no.
K ST M-05



Dimension
Metric
Design
(Pillow Block)
Dimensional series

Pillow Block Bearings
mm/inch
KST...

Dimensions [mm]

igubal® – Pillow Block Bearing KSTM

Part Number	a	d1 E10	B	C1	h1	h2	m	h3	d3	X2	Max. Pivot Angle
KSTM-05	34	5	8	6,0	7	14	25	4	3,3	5	30°
KSTM-06	43	6	9	7,0	10	18	33	5,5	4,5	6	29°
KSTM-08	47	8	12	9,0	10	20	33	6	4,5	7	25°
KSTM-10	62	10	14	10,5	14	26	46	7,5	5,5	8	25°
KSTM-12	65	12	16	12,0	14	28	46	8,5	5,5	9	25°
KSTM-14	82	14	19	13,5	18	34	60	9,5	6,6	11	23°
KSTM-16	86	16	21	15,0	18	36	60	10,5	6,6	12	23°
KSTM-18	93	18	23	16,5	22	42	68	11,5	9,0	13	23°
KSTM-20	98	20	25	18,0	22	44	68	13	9,0	14	23°
KSTM-22	108	22	28	20,0	24	48	74	14	9,0	16	22°
KSTM-25	124	25	31	22,0	27	54	86	16	9,0	17	22°
KSTM-30	139	30	37	25,0	32,5	64	96	17	11,0	20	22°

Dimensions [inch]

igubal® – Pillow Block Bearing KSTI

Part Number	a	d1 E10	B	C1	h1	h2	m	h3	d3	X2	Max. Pivot Angle
KSTI-03	1,4000	,1900	,312	,234	,290	,566	1,000	,165	,137	,200	25°
KSTI-04	1,7500	,2500	,375	,250	,390	,705	1,250	,205	,137	,250	25°
KSTI-05	1,9500	,3125	,437	,312	,430	,824	1,350	,236	,150	,280	25°
KSTI-06	2,4000	,3750	,500	,359	,550	1,022	1,800	,376	,180	,300	22°
KSTI-07	2,5000	,4375	,562	,406	,570	1,082	1,850	,315	,205	,330	22°
KSTI-08	2,8000	,5000	,625	,453	,600	1,191	2,000	,354	,205	,380	22°
KSTI-10	3,3500	,6250	,750	,484	,700	1,409	2,300	,413	,205	,470	22°
KSTI-12	3,7500	,7500	,875	,593	,860	1,687	2,700	,472	,270	,530	22°
KSTI-16	5,0000	1,0000	1,375	1,005	1,100	2,163	3,500	,630	,520	,680	20°

Available from stock

Lifetime calculation, CAD files and much more support ► www.igus.de/en/kstm

Phone +49 - 22 03 - 96 49-145
Fax +49 - 22 03 - 96 49-334

