

Split pillow block bearing for diameters up to 150 mm: ESTM-GT 150



Order key

Type Size

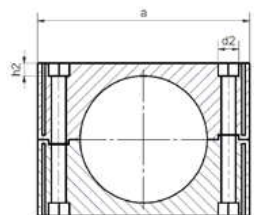
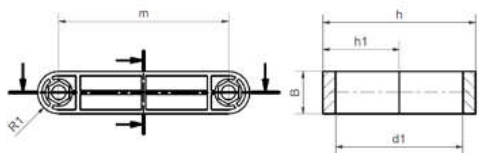
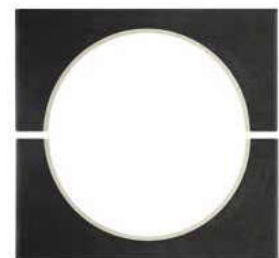
E ST M -GT 150

Dimensional series E
Pillow block bearing
Metric
Split
Inner-Ø [mm]



Material:
iglidur® GLW ▶ Page 173

- Individual diameters in 6–8 weeks
- Static loads up to 4 tons
- Reduce assembly time up to 50 %
- Resistant to corrosion and chemicals
- Dimensional series E according to standard DIN ISO 12240



Dimensions [mm]

| Part No. | d1 | d2 | h | h1 | h2 | a | m | B | R1 | Weight [g] | |
|-------------|-----|-----|----|-----|----|----|-----|-----|----|------------|-----|
| ESTM-GT 150 | E10 | 150 | 24 | 180 | 90 | 15 | 250 | 200 | 50 | 25 | 980 |

Pillow block bearing Slim line: ESTM SL



Order key

Type Size Version

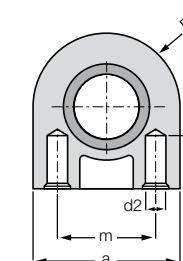
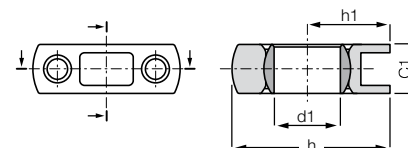
E ST M -05 SL

Dimensional series E
Pillow block bearing
Metric
Inner-Ø [mm]
Slim line



Material:
Housing: igumid G ▶ Page 1235
Spherical ball: iglidur® J ▶ Page 99

- Light weight
- Space saving
- Low-cost
- Predictable lifetime
- Maintenance- and lubrication free
- With M3 thread, e.g. ESTM-10-SL-M3
- For self tapping screw with outer diameter 3.5 mm
- Dimensional series E according to standard DIN ISO 12240



Technical data

| Part No. | Max. radial tensile strength | | Max. radial compressive strength | | Max. lateral strength | | Max. axial strength | | Weight [g] |
|------------|------------------------------|-----------|----------------------------------|-----------|-----------------------|-----------|---------------------|-----------|------------|
| | Short term | Long term | Short term | Long term | Short term | Long term | Short term | Long term | |
| | [N] | [N] | [N] | [N] | [N] | [N] | [N] | [N] | |
| ESTM-05 SL | 1,500 | 750 | 1,400 | 700 | 900 | 450 | 150 | 75 | 1.6 |
| ESTM-06 SL | 1,500 | 750 | 1,400 | 700 | 900 | 450 | 150 | 75 | 1.7 |
| ESTM-08 SL | 1,600 | 800 | 1,400 | 700 | 950 | 475 | 100 | 50 | 1.7 |
| ESTM-10 SL | 1,600 | 800 | 1,400 | 700 | 1,000 | 500 | 100 | 50 | 1.9 |

Dimensions [mm]

| Part No. | d1 | d2 | h | h1 | h2 | a | m | C1 | R1 | Max. pivot angle | |
|------------|------|-----|------|------|------|------|------|------|------|------------------|-----|
| ESTM-05 SL | E10 | 5.0 | 2.5 | 18.0 | 10.0 | 6.5 | 16.0 | 10.0 | 6.0 | 8.0 | 17° |
| ESTM-06 SL | 6.0 | 2.5 | 18.0 | 10.0 | 6.5 | 16.0 | 10.0 | 6.0 | 8.0 | 17° | |
| ESTM-08 SL | 8.0 | 2.5 | 19.0 | 10.0 | 6.5 | 18.0 | 12.0 | 6.0 | 9.0 | 17° | |
| ESTM-10 SL | 10.0 | 2.5 | 20.0 | 10.0 | 6.5 | 20.0 | 14.0 | 6.0 | 10.0 | 17° | |