



With 2 mounting holes

### Special Properties

- igumid G housing
- iglidur® W300 highly wear resistant spherical ball
- Easy to install
- Compensation for alignment errors
- Corrosion resistance
- Light weight
- Maintenance-free, self-lubricating



### Material

Housing: igumid G  
 ► Page 70.6  
 Spherical Bearing:  
 iglidur® W300  
 ► Chapter 5

### Load Data

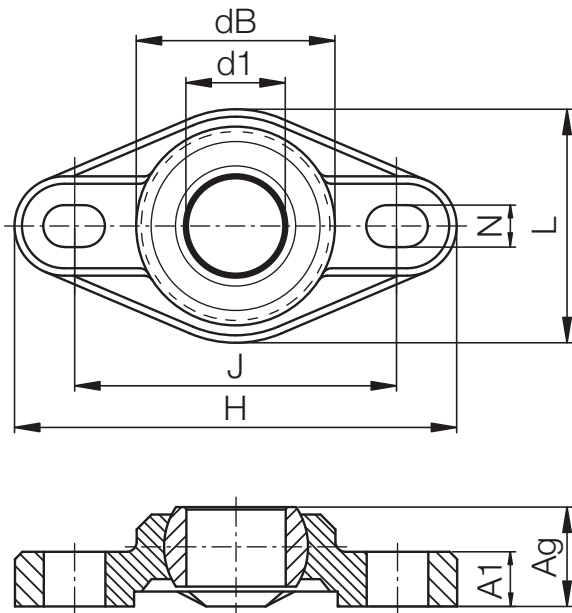
igubal® – Flange Bearing EFOM with 2 Mounting Holes

Part number	Max. axial permissible tensile strength spherical ball [N]	Max. axial permissible tensile strength long term [N]	Max. radial permissible tensile strength [N]	Max. radial permissible tensile strength long term [N]	Max. Torque for Longitudinal holes [Nm]
EFOM-04	400	200	750	375	0,6
EFOM-05	400	200	750	375	0,6
EFOM-06	500	250	800	400	0,6
EFOM-08	700	350	1100	550	1,3
EFOM-10	850	425	2000	1000	2,5
EFOM-12	1100	550	2200	1100	2,5
EFOM-15	1300	650	2400	1200	4,5
EFOM-16	1400	700	2800	1400	4,5
EFOM-17	1800	900	3200	1600	4,5
EFOM-20	1800	900	5500	2750	10,5
EFOM-25	3000	1500	6000	3000	10,5
EFOM-30	3500	1750	6500	3250	21,5



The igubal® flange bearings provide a low-cost and easy option for corrosion-resistant bearing assemblies in the attachments for lawn care and outdoor cleaning.

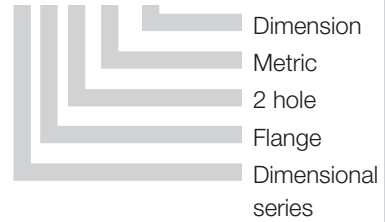
Lifetime calculation, CAD files and much more support ► [www.igus.de/en/efom](http://www.igus.de/en/efom)



Data in mm

Structure – part no.

**E F O M-04**



### Material

Housing: igumid G

► Page 70.6

Spherical Bearing:

iglidur® W300

► Chapter 5

## Dimensions [mm]

igubal® – Flange Bearing EFOM with 2 Mounting Holes

Part No	d1 E10	dB	H Size	L Width	J Hole Pitch ±0,1	A <sub>1</sub> Height of Plate	A <sub>g</sub> Height Total	N Bore Diameter d x l	Max. Pivot Angle
EFOM-04	4	14,0	33,8	16,0	24,0	4,5	8,5	3,2 x 5,0	28
EFOM-05	5	14,0	33,8	16,0	24,0	4,5	8,5	3,2 x 5,0	29
EFOM-06	6	14,0	33,8	16,0	24,0	4,5	8,5	3,2 x 5,5	25
EFOM-08	8	18,0	44,2	22,0	31,0	5,5	10,5	4,3 x 6,5	25
EFOM-10	10	22,2	52,0	26,0	36,0	6,5	12,0	5,3 x 8,0	25
EFOM-12	12	25,0	56,7	31,0	41,0	7,0	13,0	5,3 x 8,0	21
EFOM-15	15	29,8	68,6	36,0	50,0	8,5	15,5	6,4 x 10,0	20
EFOM-16	16	32,0	72,6	38,0	53,0	10,0	17,5	6,4 x 10,1	27
EFOM-17	17	34,8	74,6	41,0	55,0	10,0	18,0	6,4 x 10,2	21
EFOM-20	20	40,0	89,0	47,0	65,0	11,0	20,0	8,4 x 12,5	19
EFOM-25	25	48,5	101,0	58,5	75,0	14,0	25,0	8,4 x 12,6	15
EFOM-30	30	55,0	118,0	65,0	87,5	15,0	26,0	10,5 x 16,0	14

Available from stock

To apply to following standard tolerances:

from 0,5 to 6 mm: ±0,1 mm

over 6 to 30 mm: ±0,2 mm

over 30 to 120 mm: ±0,3 mm

## Spherical bearing material to choose ► Page 57.3



J4VEM:  
clearance-free



JEM: Low  
moisture absorption



REM:  
Low Cost

Lifetime calculation, CAD files and much more support ► [www.igus.de/en/efom](http://www.igus.de/en/efom)

Flange Bearings

EFOM

mm

Phone +49 - 22 03 - 96 49-145  
Fax +49 - 22 03 - 96 49-334

