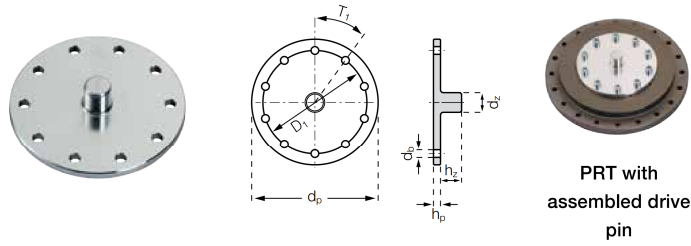


Drive pins

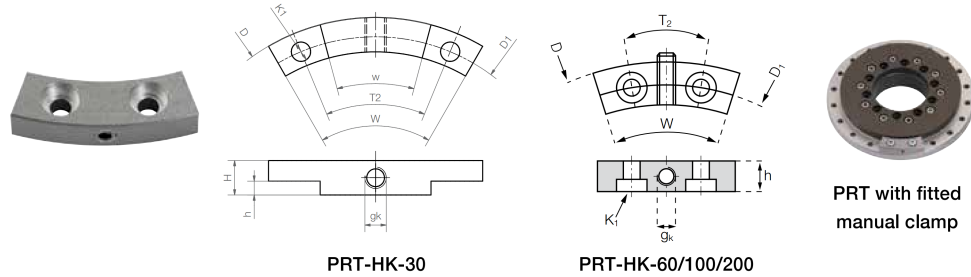


PRT with assembled drive pin

Dimensions [mm]

dp	hp	dz	hz	D1	T1	db	Part No.
55	5	10	15	42.5	8x45°	4.5	PRT-AZ-30
90	5	14	15	74	10x36°	5.5	PRT-AZ-60

Manual clamp



PRT-HK-30

PRT-HK-60/100/200

PRT with fitted manual clamp

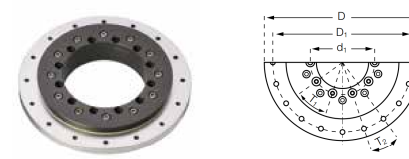
- With 1 Nm screw torque, a holding torque up to 10 Nm is possible
- Easy to screw onto outer ring

Dimensions [mm]

D	D1	T2	K1	H	h	gk	W	Part No.
			for screw					
100	91	45°	Ø 4.5	8	3.2	M5	60°	PRT-HK-30
160	145	18°	DIN 7984 M5	-	10	M6	35°	PRT-HK-60
205	185	22.5°	DIN 7984 M5	-	10	M6	40°	PRT-HK-100 <sup>12)</sup>
320	300	22.5°	DIN 7984 M6	-	10	M6	40°	PRT-HK-200 <sup>12)</sup>

<sup>12)</sup> To be connected only with enlarged outer ring

Slewing ring bearing with enlarged outer ring

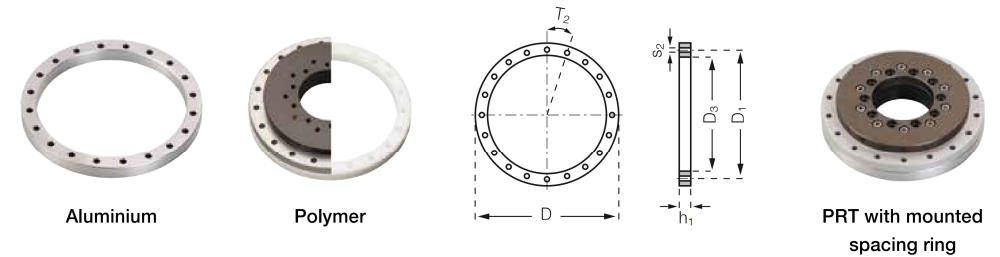


Dimensions [mm] – other dimensions similar to standard type PRT-01 ► Page 550

D	D1	S2	Part No. <sup>11)</sup>
205	185	5.5	PRT-01-100-M-ARG
205	185	M6	PRT-01-100-M-ARGG
205	185	5.5	PRT-01-100-M-ARGS
320	300	7.0	PRT-01-200-M-ARG
320	300	M8	PRT-01-200-M-ARGG
320	300	7.0	PRT-01-200-M-ARGS

<sup>11)</sup> Ending: -G standard, -GG thread- or -GS counterbore

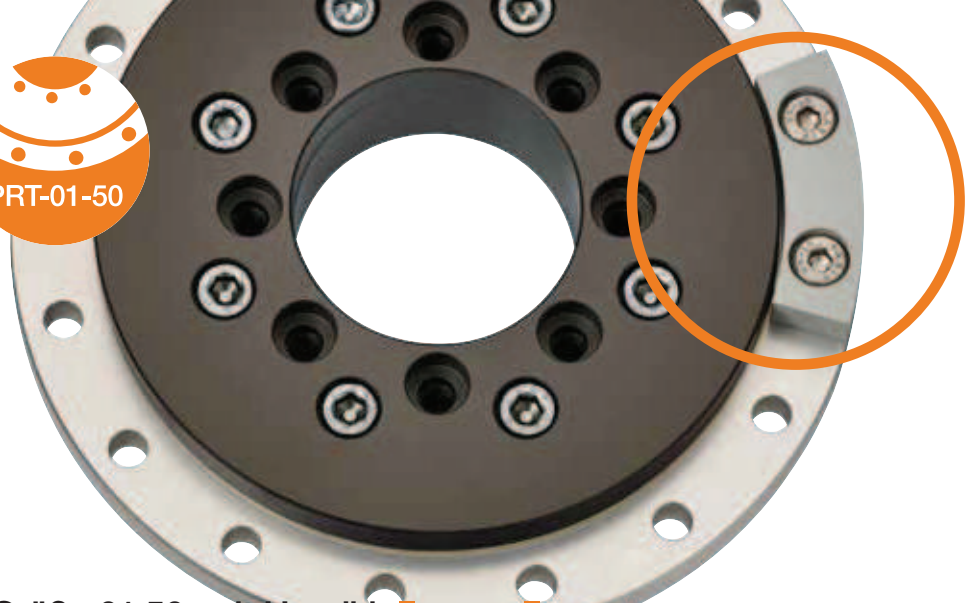
Spacing rings made from anodised aluminium or polymer (POM)



Dimensions [mm]

D	D1	T2	S2	D3	h1	Part No. <sup>39)</sup>
80	70	6 x 60°	4.5	62	10	PRT-01-20-DR
100	91	8 x 45°	4.5	84	11	PRT-01-30-DR
160	145	20 x 18°	5.5	132	13	PRT-01-60-DR
185	170	16 x 22.5°	5.5	162	13	PRT-01-100-DR
250	235	16 x 22.5°	5.5	222	13	PRT-01-150-DR
300	285	16 x 22.5°	7.0	276	13	PRT-01-200-DR
450	430	16 x 22.5°	9.0	412	15	PRT-01-300-DR

<sup>39)</sup> Please add suffix "-POM" for plastic version (not available for sizes 150 and 300)



... Größe 01-50: mit Handklemmung ...

# ... manual clamp ...

**Manual clamps now available for size 50: PRT-HK-50**

- With 1 Nm screw torque, a holding torque up to 10 Nm is possible
- Can be screwed together with outer ring
- Lubrication and maintenance-free

**Typical application areas:**

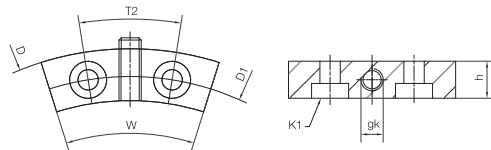
Format adjustments, manually operated applications, assembly workplaces

**Handklemmung jetzt auch für die 50er Baugröße: PRT-HK-50**

- Mit 1 Nm Anziehdrehmoment 10 Nm Haltemoment realisierbar
- Mit Außenring zusammen verschraubbar
- Schmiermittel- und wartungsfrei

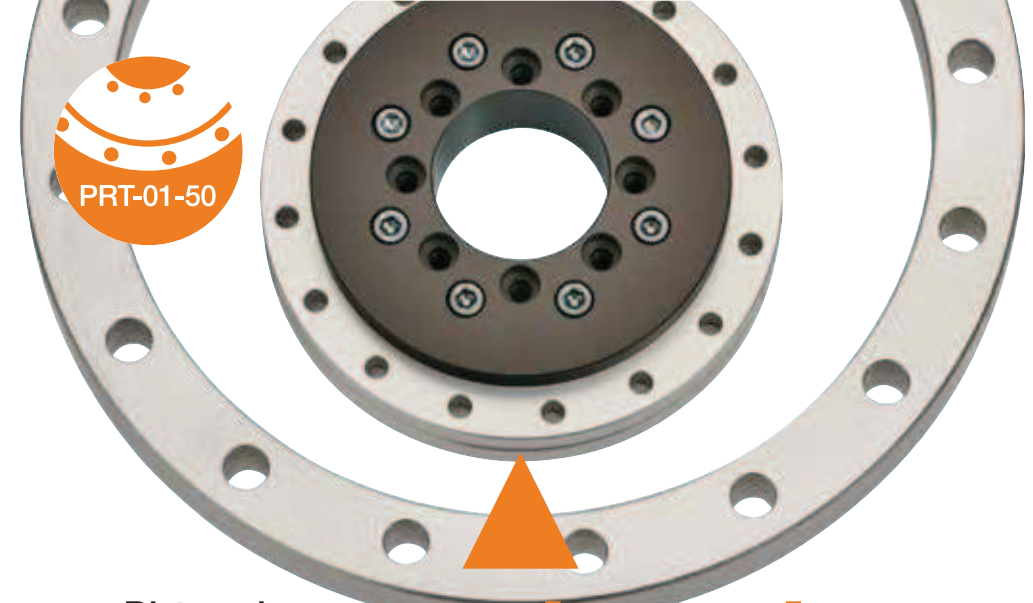
**Typische Anwendungsbereiche:**

Formatverstellungen, manuell betätigte Anwendungen, Montagearbeitsplätze



**Dimensions Abmessungen [mm]**

Part No. Art.-Nr.	D	D1	T2	K1 for screw für Schraube	h	gk	W
PRT-HK-50	150	135	22.5 °	ISO 4762 M6	10	M6	40°



...neuer Distanzring ...

# ... new spacing ring ...

**Aluminium spacing ring now available for size 50: PRT-01-50-DR**

- Easy installation
- No through-hole necessary
- Can be retrofitted
- Uniform look
- Lubrication and maintenance-free

**Typical application areas:**

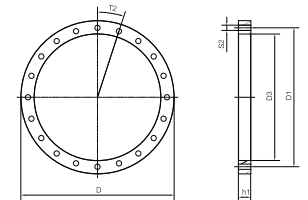
Automation, jig construction, precision mechanics

**Distanzringe aus Aluminium jetzt auch für die 50er Baugröße: PRT-01-50-DR**

- Einfache Montage
- Einbau ohne Einlassbohrung möglich
- Nachrüstbar
- Einheitliche Optik
- Schmiermittel- und wartungsfrei

**Typische Anwendungsbereiche:**

Automatisierung, Vorrichtungsbau, Feinmechanik



**Dimensions Abmessungen [mm]**

Part No. Art.-Nr.	D	D1	T2	S2	D3	h1
PRT-01-50-DR	150	135	16 x 22.5°	6.6	122	13

Available Lieferbar upon request auf Anfrage

www.igus.eu/PRT  
www.igus.de/PRT

Available Lieferbar from stock ab Lager

www.igus.eu/PRT  
www.igus.de/PRT