



# igidur® – Flange Bearings



- Very good wear resistance
- Maintenance-free
- Material: iglidur® G, iglidur® A180, iglidur® J and iglidur® X
- Light weight

igidur® Flange Bearings

Phone +49 - 22 03 - 96 49-145  
Fax +49 - 22 03 - 96 49-334

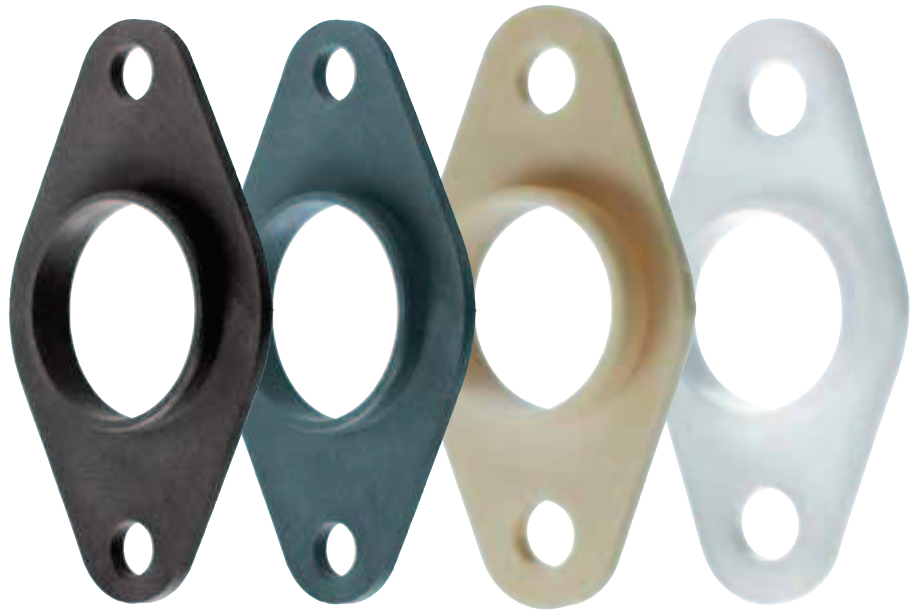




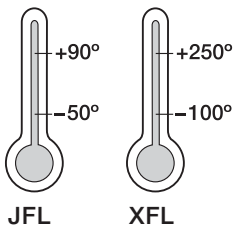
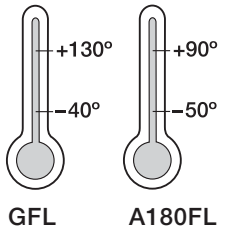
With this design it is possible to use iglidur® high performance plain bearings in locations where recommended housing bore tolerances are not possible.

iglidur® Flange Bearings

1 style  
> 5 dimensions  
Ø 10–35 mm



Phone +49 - 22 03 - 96 49-145  
Fax +49 - 22 03 - 96 49-334



iglus® GmbH  
51147 Cologne



### When to use iglidur® Flange Bearings:

- Maintenance-free
- Very good wear resistance
- Very high temperature resistance
- Resistant to dirt, dust, and lint
- Corrosion resistant
- Vibration dampening
- Used for rotating and linear movements
- Very light weight
- Easy installation
- Inner diameter of 10 mm to 35 mm available. Can also be used in bores with larger tolerances

### When not to use iglidur® Flange Bearings:

- When alignment compensation is necessary  
igubal® Flange Bearings ► chapter 54



Picture 34.1: iglidur® Flange Bearing

Internet [www.igus.de](http://www.igus.de)  
E-mail [info@igus.de](mailto:info@igus.de)



### Available materials:

- iglidur® G ► chapter 2
- iglidur® A180 ► chapter 7
- iglidur® J ► chapter 3
- iglidur® X ► chapter 6



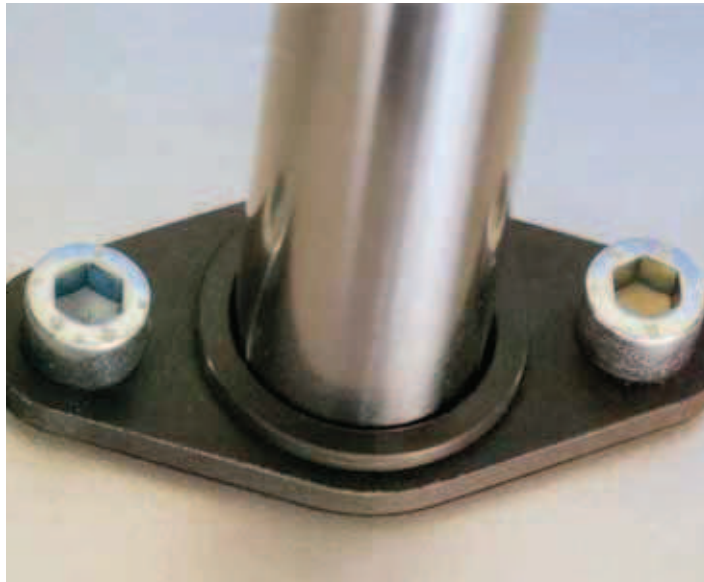
With this design it is possible to use iglidur® high performance plain bearings in locations where recommended housing bore tolerances are not possible.

## Standard: iglidur® G

Due to the design of the bearing, high loads are possible although there is a minimal precision requirement of the housing. iglidur® maintenance-free flange bearings are made of iglidur® G but can also be manufactured by special order from the different iglidur® materials. In this way, all the advantages of the iglidur® high performance polymers can be used.

## Installation

Depending on the requirements, different mounting types can be considered. For low radial loads, it is sufficient to mount iglidur® flange bearings on one surface simply with two bolts. For higher radial loads, it is advisable to support the iglidur® flange bearing in a bore on the reinforced side facing the direction of the load. For this bore, large tolerances are permitted, since it serves only as additional support for the iglidur® flange bearing. In order to achieve higher radial loads in the bearings, the iglidur® flange bearing can be pressfit into a recommended housing bore. The additional bolts ensure the fit of the bearing in the housing. For the installation of the iglidur® maintenance-free flange bearing, no special materials or tools are necessary.



Picture 34.2: The installation of iglidur® flange bearing, simple and secure

iglidur® Flange Bearings

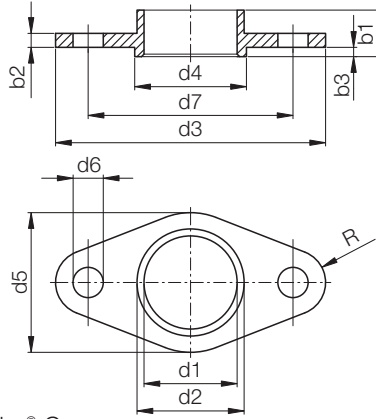
Phone +49 - 22 03 - 96 49-145  
 Fax +49 - 22 03 - 96 49-334





iglus®

iglidur® | Flange Bearings | mm



Data in mm

Structure - part no.

**G F L-10**



mm

iglidur® Flange Bearings

Phone +49 - 22 03 - 96 49-145  
Fax +49 - 22 03 - 96 49-334

iglus® GmbH  
51 147 Cologne

Internet [www.igus.de](http://www.igus.de)  
E-mail [info@igus.de](mailto:info@igus.de)

**Dimensions [mm]**

iglidur® Flange Bearings | Material iglidur® G

Part No.	d1 <sup>1)</sup>	d2 <sup>2)</sup>	d3	d4	d5	d6	d7	b1	b2	b3	R
							(±0,2)				
GFL-10	10	12	30	14	15	4,5	22	6	2	1	4
GFL-12	12	14	36	16	18	4,5	26	6	2	1	4,5
GFL-14	14	16	42	18	21	5,5	30	6	2	1	5
GFL-16	16	18	48	20	24	5,5	34	6	2	1	5,5
GFL-18	18	20	54	22	27	6,5	39	6	2	1	7
GFL-20	20	23	60	26	30	6,5	44	10	3	2	7
GFL-25	25	28	75	30	35	6,5	55	10	3	2	8,5
GFL-30	30	34	90	36	40	8,5	66	10	3	2	10
GFL-35	35	39	95	41	55	8,5	77	10	3	2	12

iglidur®-Flanschlager | Material iglidur® A180

Part No.	d1 <sup>1)</sup>	d2 <sup>2)</sup>	d3	d4	d5	d6	d7	b1	b2	b3	R
							(±0,2)				
A180FL-10	10	12	30	14	15	4,5	22	6	2	1	4
A180FL-12	12	14	36	16	18	4,5	26	6	2	1	4,5
A180FL-16	16	18	48	20	24	5,5	34	6	2	1	5,5
A180FL-20	20	23	60	26	30	6,5	44	10	3	2	7
A180FL-25	25	28	75	30	35	6,5	55	10	3	2	8,5
A180FL-30	30	34	90	36	40	8,5	66	10	3	2	10
A180FL-35	35	39	95	41	55	8,5	77	10	3	2	12

iglidur®-Flanschlager | Material iglidur® J

Part No.	d1 <sup>1)</sup>	d2 <sup>2)</sup>	d3	d4	d5	d6	d7	b1	b2	b3	R
							(±0,2)				
JFL-10	10	12	30	14	15	4,5	22	6	2	1	4
JFL-12	12	14	36	16	18	4,5	26	6	2	1	4,5
JFL-16	16	18	48	20	24	5,5	34	6	2	1	5,5
JFL-20	20	23	60	26	30	6,5	44	10	3	2	7
JFL-25	25	28	75	30	35	6,5	55	10	3	2	8,5
JFL-30	30	34	90	36	40	8,5	66	10	3	2	10
JFL-35	35	39	95	41	55	8,5	77	10	3	2	12

iglidur®-Flanschlager | Material iglidur® X

Part No.	d1 <sup>1)</sup>	d2 <sup>2)</sup>	d3	d4	d5	d6	d7	b1	b2	b3	R
							(±0,2)				
XFL-10	10	12	30	14	15	4,5	22	6	2	1	4
XFL-12	12	14	36	16	18	4,5	26	6	2	1	4,5
XFL-16	16	18	48	20	24	5,5	34	6	2	1	5,5
XFL-20	20	23	60	26	30	6,5	44	10	3	2	7
XFL-25	25	28	75	30	35	6,5	55	10	3	2	8,5
XFL-30	30	34	90	36	40	8,5	66	10	3	2	10
XFL-35	35	39	95	41	55	8,5	77	10	3	2	12

1) Tolerance for d1: E10 (Plug gauge measurement)

2) Pressfit in H7 tolerance housing bore