

igidur® Clip Bearings



Easy to fit

Increased security with the double flange design

Good wear resistance

Maintenance-free and predictable lifetime

Material: iglidur® M250

Special dimensions are possible

igidur® Clip Bearings

Phone +49 - 22 03 - 96 49-145
Fax +49 - 22 03 - 96 49-334





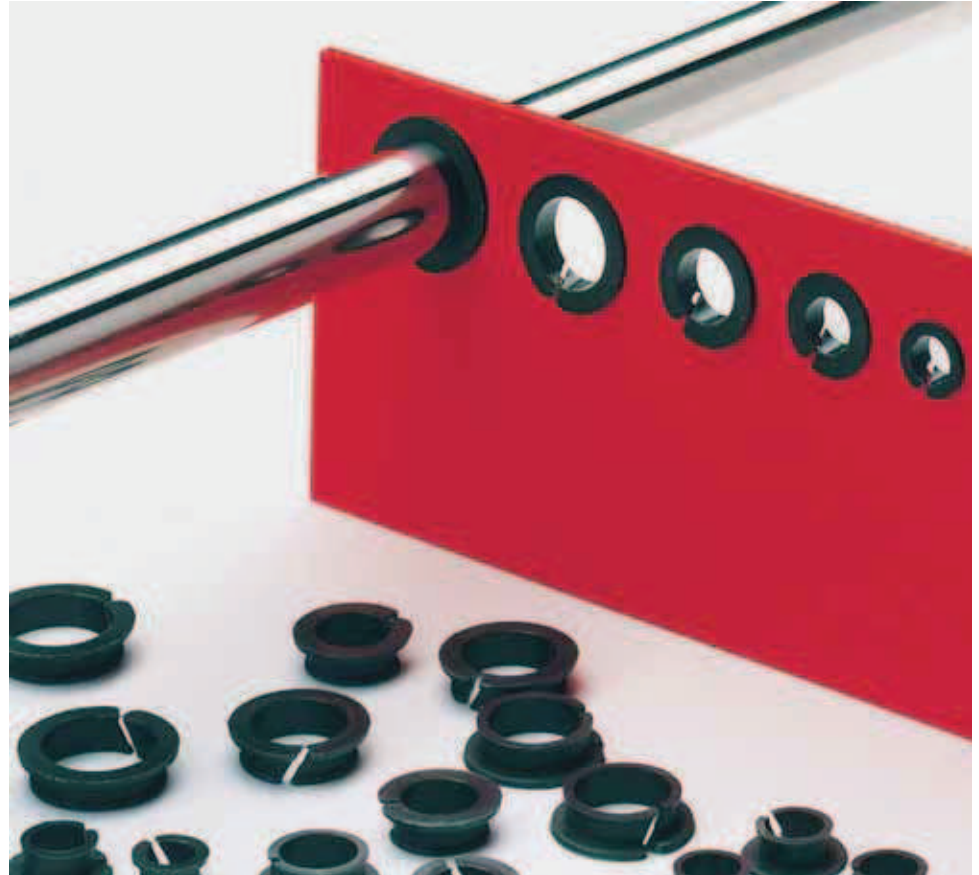
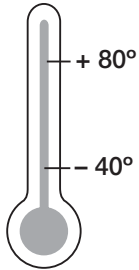
iglidur® clip bearings are designed specifically for putting shafts through sheet metal. For this reason, the bearings have flanges located on both ends. The bearings are secured in the sheet metal plate on both sides after fitting.

iglidur® Clip Bearings

1 style
> 25 dimensions
Ø 3–25 mm



Phone +49 - 22 03 - 96 49-145
Fax +49 - 22 03 - 96 49-334



iglus® GmbH
51147 Cologne

iglidur® Clip Bearings



Advantages:

- Very easy installation
- Maintenance-free and self-lubricating
- Good wear resistance
- Smooth operation
- Low noise
- Used for both rotational and linear movements
- Expansion possible due to slot design
- Secured with the double flange design
- Special dimensions are possible
- For sheet metal thicknesses of 2 mm, 3 mm and 4 mm from stock



Material:
iglidur® M250
▶ chapter 4

Internet www.igus.de
E-mail info@igus.de



iglidur® clip bearings are designed specifically for putting shafts through sheet metal. For this reason, the bearings have flanges located on both ends. The bearings are secured in the sheet metal plate on both sides after fitting.

The clip bearings have an angled slot which allows the bearings to be fitted from one side. After fitting, the bearing expands and forms a lining for the bore in the metal plate. The shaft prevents the clip bearing from falling out the housing. Even during linear movement, the bearing cannot slide out of the housing.

In addition, the lateral slot can compensate for bearing expansions due to temperature or moisture. During expansion, the slot width decreases, and changes to the bearing clearance are minimized.

The flange diameter on the smaller side is made in such a way that housings with larger tolerances still provide sufficient security.

Special Properties of the iglidur® Clip Bearing

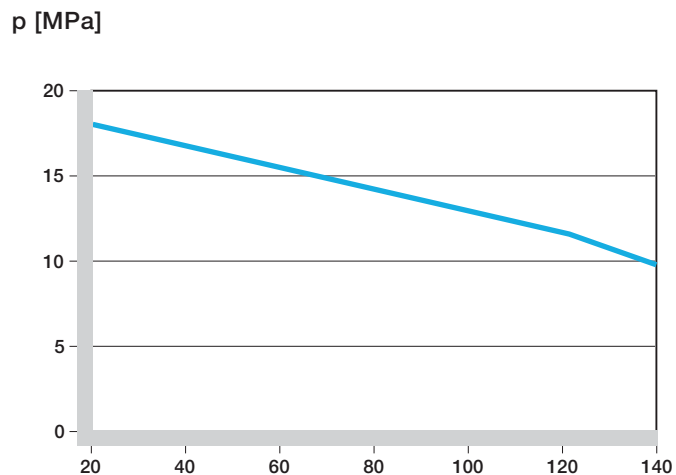
iglidur® clip bearings are made of wear resistant material iglidur® M250. This is a plain bearing material with strong wear resistance at average loads. The bearings are self-lubricating and are designed to be used dry. However iglidur® M250 material is resistant to all common lubricants. Other special materials are available upon request, please contact us for more details.

Compressive Strength

The permissible static pressure of iglidur® clip bearings at room temperature is 20 MPa. Due to the possibility of high tolerances in the housing bore, the clip bearing has a high compressive strength even for punched holes. For bearing surfaces that are very small, the vibration dampening properties and the resistance to edge loads are especially important.



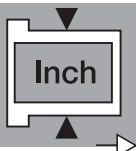
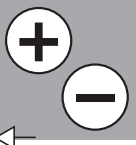
Picture 31.1: Clip bearings are available in sizes from 3 to 25 mm from stock



Graph 31.1: Recommended maximum surface pressure as a function of the operating temperature for iglidur® M250 clip bearings

iglidur® Clip Bearings

Phone +49 - 22 03 - 96 49-145
Fax +49 - 22 03 - 96 49-334





iglidur® | Clip Bearings

iglidur® Clip Bearings

Phone +49 - 22 03 - 96 49-145
Fax +49 - 22 03 - 96 49-334

igus® GmbH
51147 Cologne

Internet www.igus.de
E-mail info@igus.de

m/s	Rotating	Oscillating	Linear
Continuous	0,8	0,8	2,5
Short term	2	2	5

Table 31.1: Maximum running speeds

iglidur® M250	Application Temperature
Minimum	-40 °C
Max. Long term	+80 °C
Max. Short term	+170 °C

Table 31.2: Temperature limits for iglidur® M250

Surface Speeds

Clip bearings are extremely wear resistant in slow rotating, oscillating, and linear movements. The maximum surface speeds for the different movements are the same as for the material M250 (Table 31.1).

With lubrication the permissible speeds can be increased.

Operating Temperatures

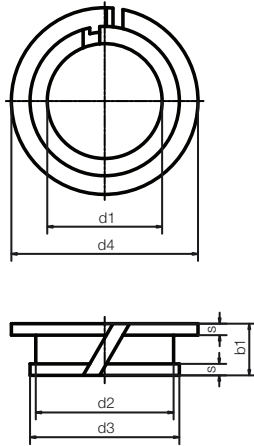
For operating temperatures up to 80 °C iglidur® clip bearings display high wear resistance.

Even in the cold, the plain bearings remain elastic and resistant to wear.

Installation

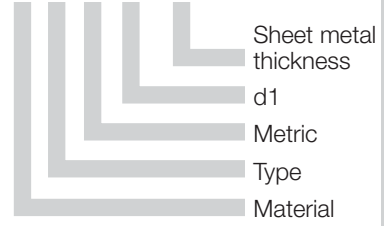
For installation, the plain bearings are pressed together on the side with the large flange. The angled slot makes the bearing spiral shaped so that it can be placed easily into the metal plate.

The slot also compensates for expansions of the circumference. In this way, a tight clearance is possible with the clip bearings. The recommended clearance allows a nominal size shaft to turn easily. The clip bearings should be fitted into a housing with a "H" class tolerance, up to H13. The clip bearing can also rotate within the housing bore.



Data in mm

Structure – part no.
M C M-03-02



Part No.	d1 D11*	d2	d3	d4	s	b1
MCM-03-02	3	4,2	4,8	6	0,6	3,2
MCM-04-02	4	5,2	5,9	7	0,6	3,2
MCM-05-02	5	6,2	6,8	8	0,6	3,2
MCM-06-02	6	7,2	7,8	11	0,6	3,2
MCM-08-02	8	9,6	10,4	13	0,8	3,6
MCM-09-02	9	10,6	11,4	14	0,8	3,6
MCM-10-02	10	11,6	12,4	15	0,8	3,6
MCM-12-02	12	13,6	14,4	17	0,8	3,6
MCM-16-02	16	17,6	18,4	21	0,8	3,6
MCM-03-03	3	4,2	4,8	6	0,6	4,2
MCM-04-03	4	5,2	5,9	7	0,6	4,2
MCM-05-03	5	6,2	6,8	8	0,6	4,2
MCM-06-015	6	7,2	7,8	11	0,6	3,2
MCM-06-03	6	7,2	7,8	11	0,6	4,2
MCM-07-03	7	9	9,8	13	0,8	4,6
MCM-08-03	8	9,6	10,4	13	0,8	4,6
MCM-10-025	10	11,6	12,4	15	0,8	4,1
MCM-10-03	10	11,6	12,4	15	0,8	4,6
MCM-10-08	10	11,6	12,4	15	0,8	9,6
MCM-12-03	12	13,6	14,4	17	0,8	4,6
MCM-12-035	12	13,6	14,4	17	0,8	5,1
MCM-14-03	14	15,6	16,4	19	0,8	4,6
MCM-16-03	16	17,6	18,4	21	0,8	4,6
MCM-18-03	18	20	21	23	1,0	5,0
MCM-20-03	20	22	23	25	1,0	5,0
MCM-25-03	25	27	28	30	1,0	5,0
MCM-06-04	6	7,2	7,8	11	0,6	5,2
MCM-12-04	12	13,6	14,4	17	0,8	5,6

* d1 measurement is measured with a plug gauge after fitting into a reference housing d2 +0.005 mm.

Order example

Our price breaks are defined by the order quantity.

1- 9	25-49	100-199	500- 999	2500-4999
10-24	50-99	200-499	1000-2499	

For the current prices please visit the igus®-Homepage www.igus.de/en

No minimum order quantities, no surcharges.



iglidur® Clip Bearings

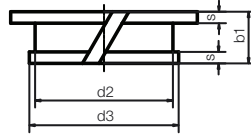
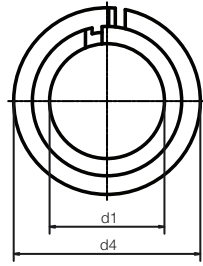
mm

Phone +49 - 22 03 - 96 49-145
Fax +49 - 22 03 - 96 49-334



iglus®

iglidur® | Clip Bearings | inch



Data in inches

Structure – part no.

MC I -03-01



Sheet metal thickness

d1

Inch

Type

Material



inch

iglidur® Clip Bearings

Phone +49 - 22 03 - 96 49-145
Fax +49 - 22 03 - 96 49-334

iglus® GmbH
51147 Cologne

Internet www.igus.de
E-mail info@igus.de

Part No.	d1	d2	d3	d4	s	b1
	D11*				-0,10	+0,20
MCI-03-01	3/16	0,2343	1/4	5/16	0,032	0,1380
MCI-04-01	1/4	0,3125	11/32	7/16	0,032	0,1380
MCI-05-01	5/16	0,3750	13/32	1/2	0,032	0,1380
MCI-06-01	3/8	0,4375	15/32	9/16	0,032	0,1380
MCI-07-01	7/16	0,5000	17/32	5/8	0,032	0,1380
MCI-08-01	1/2	0,5625	19/32	11/16	0,032	0,1380
MCI-03-02	3/16	0,2343	1/4	5/16	0,032	0,2000
MCI-04-02	1/4	0,3125	11/32	7/16	0,032	0,2000
MCI-05-02	5/16	0,3750	13/32	1/2	0,032	0,2000
MCI-06-02	3/8	0,4375	15/32	9/16	0,032	0,2000
MCI-07-02	7/16	0,5000	17/32	5/8	0,032	0,2000
MCI-08-02	1/2	0,5625	19/32	11/16	0,032	0,2000

* d1 measurement is measured with a plug gauge after fitting into a reference housing d2 +0.005 mm.



Dimensions thrust washer Abmessungen Anlaufscheiben [mm]

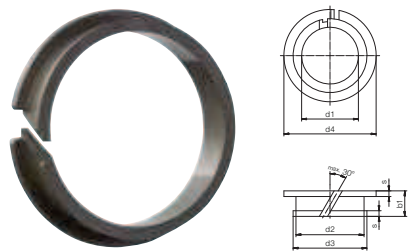
Part No. Art.-Nr.	d1	d2	s	d4 h13	d5
GTM-0825-015	8	25	1.5	-	-
GTM-1220-010	12	20	1	-	-
GTM-4060-035	40	60	3.5	-	-
JTM-0615-015	6	15	1.5	-	-
JTM-0815-015	8	15	1.5	-	-
JTM-0818-015	8	18	1.5	13	1.5
JTM-1018-010	10	18	1	-	-
JTM-2644-015	26	44	1.5	35	3
JTM-6290-020	62	90	2	-	-



Dimensions sleeve
Abmessungen zylindrisch [inch]

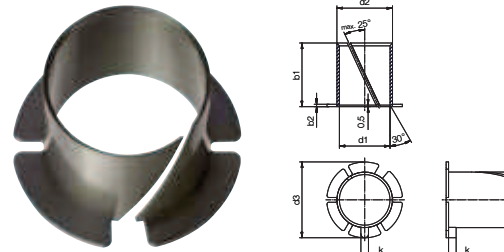
Part No. Art.-Nr.	d1	d1 tolerance d1-Toleranz	d2	b1 h13
A181SI-0406-06	1/4	+0.2539 +0.2516	3/8	3/8
GSI-1216-08	3/4	+0.7590 +0.7560	1	1/2
GSI-1620-55	1	+1.0092 +1.0062	1 1/4	55/16
GSI-1620-14	1	+1.0092 +1.0062	1 1/4	7/8
GSI-1620-44	1	+1.0092 +1.0062	1 1/4	11/4
GSI-2428-44	1 1/2	+1.5107 +1.5067	1 3/4	11/4
GSI-2428-20	1 1/2	+1.5107 +1.5067	1 3/4	1 1/4
GSI-5659-48	3 1/2	+3.5830 +3.5028	59/16	3
H1SI-0810-12	1/2	+0.5034 +0.5006	5/8	3/4

Part No. Art.-Nr.	d1	d1 tolerance d1-Toleranz	d2	b1 h13
JSI-1011-10	5/8	+0.6280 +0.6253	23/32	5/8
JSI-1011-14	5/8	+0.6280 +0.6253	23/32	7/8
JSI-1011-20	5/8	+0.6280 +0.6253	23/32	1 1/4
JSI-2226-32	1 3/8	+1.3809 +1.3770	1 5/8	2
Q2SI-4852-48	3	+3.0071 +3.0024	3 1/4	3
QSI-2428-16	1 1/2	+1.5059 +1.5020	1 3/4	1
QSI-2428-24	1 1/2	+1.5059 +1.5020	1 3/4	1
QSI-2428-40	1 1/2	+1.5059 +1.5020	1 3/4	5/2



Dimensions clips bearing
Abmessungen Clipslager [mm]

Part No. Art.-Nr.	d1	d2	d3	d4	s	b1
MCM-12-018	12.0	13.6	14.4	17.0	0.8	3.4



Dimensions split bearing
Abmessungen Schlitzlager [inch]

Part No. Art.-Nr.	d1	d2	b1	d3	b2
MYI-05-10	5/16	0.3744	5/8	1/2	0.0299



Dimensions with flange
Abmessungen mit Bund [inch]

Part No. Art.-Nr.	d1	d1 tolerance d1-Toleranz	d2	d3	b1 h13	b2
GFI-1012-08	5/8	+0.6297 +0.6270	3/4	1/2	1	0.062
GFI-1012-12	5/8	+0.6297 +0.6270	3/4	3/4	1	0.062
GFI-1012-16	5/8	+0.6297 +0.6270	3/4	1	1	0.062
GFI-1214-18	3/4	+0.7541 +0.7505	7/8	1 1/4	1.125	0.062
ZFI-0304-06	3/16	+0.1888 +0.1869	1/4	3/8	0.375	0.032

Calculate online Online berechenbar
www.igus.eu/iglidur-experte
www.igus.de/iglidur-expert

Available Lieferbar
 from stock ab Lager

www.igus.de/iglidur
www.igus.eu/iglidur

Calculate online Online berechenbar
www.igus.eu/iglidur-experte
www.igus.de/iglidur-expert

Available Lieferbar
 from stock ab Lager

www.igus.de/iglidur
www.igus.eu/iglidur