

Dimensions [mm]

d1	d1-Tolerance <sup>9)</sup>	d2 <sup>9)</sup>	d3	b1	b2	k	Part No.
			±0.40	-0.40	-0.13		
4	+0.025 +0.075	5.20	7.00	4.00	0.60	1.0	MYM-04-04-K
5	+0.025 +0.075	6.20	8.00	5.00	0.60	1.0	MYM-05-05-K
6	+0.025 +0.075	7.20	9.50	6.00	0.60	1.5	MYM-06-06-K
10	+0.025 +0.075	11.60	15.00	10.00	0.80	2.0	MYM-10-10-K
14	+0.025 +0.075	15.60	21.00	14.00	0.80	3.0	MYM-14-14-K

<sup>8)</sup> d1 value is measured with a plug gauge after fitting into a reference housing d2 (+0.005)

<sup>9)</sup> Recommended housing bore tolerance: H9

Order key

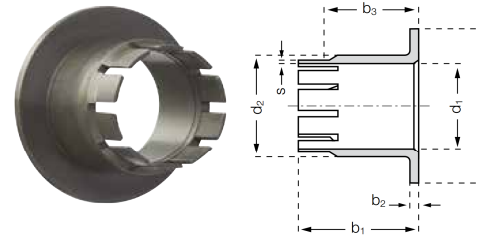
Type Dimensions Option

M Y M - 04 - 04 - K

iglidur® material	Form: Clips2	Metric	Inner-Ø d1 [mm]	Length b1 [mm]	Anti-rotation feature
-------------------	--------------	--------	-----------------	----------------	-----------------------

Material:  
iglidur® M250 ▶ Page 111

Inch dimensions available  
▶ From page 1183



Order key

Type Dimensions

M K M -1012-10

iglidur® material	Type (Form K)	Metric	Inner-Ø d1 [mm]	Outer-Ø d2 [mm]	Metal sheet thickness [mm]
-------------------	---------------	--------	-----------------	-----------------	----------------------------

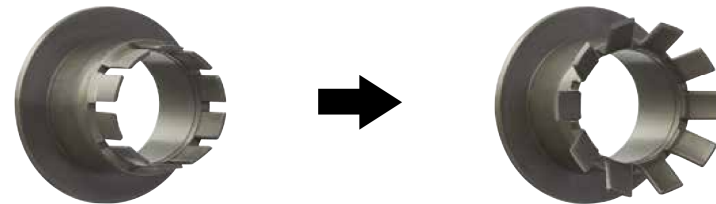
Material:  
iglidur® M250 ▶ Page 111

Sample dimension [mm]

d1	d1-Tolerance <sup>9)</sup>	d2	d3	b1	b2	b3	s	Part No.
	E10		d13	h13	-0.14	+0.1/+0.7	±0.1	
10	+0.025 +0.083	12	18	14	1	10	0.4	MKM-1012-10

<sup>9)</sup> After pressfit. Testing methods ▶ Page 75

Assembly:



Press in, fold down, ready: axial load on both sides



Please contact us if you need a custom-made bearing for your application. We will help you with your design, drawing on the experience that we have with a large number of custom bearing solutions.