



For Series:

Easy Chain®

- E200/Z200

E2/000

- 1400/1500/1450/1480
- 2400/2500/2450/2480
- 255

E2 E-Tubes

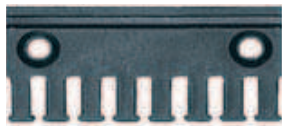
- R117/R118
- R48

E4

- E4.28

E6

- E6.29/R6.29
- E6.35
- E6.40



For Series:

Easy Chain®

- E26/Z26
- E300/Z300

E2/000

- 2600/2700/2650/2680
- 3400/3500/3450/3480

E4

- E4.32/H4.32/R4.32
- E4.42/H4.42/R4.42
- E4.56/H4.56/R4.56
- E4.80/H4.80/R4.80
- 1640
- 800
- 840
- 600/601/R608
- 640
- 14040/14140/18840
- 14240/14340
- 15050/15150/19850
- 15250/15350

E6

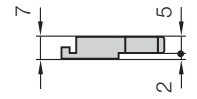
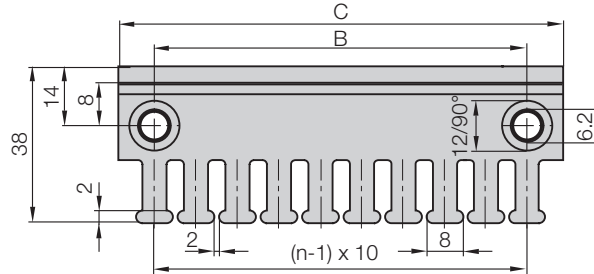
- E6.52/R6.52
- E6.62
- E6.80L / E6.80

Option 1: Chainfix tiewrap plates as single parts

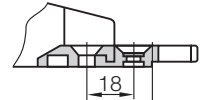
Characteristic features:

- As individual component screwed on KMA (plastic metal mounting brackets)
- Can be plugged in the mounting brackets
- **Use:** single part for the manufacturing of switchgear cabinets or for the assembly of machines
- Accessory for igus® E-ChainSystems®

Series 2000 - Tiewrap plate as single part



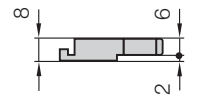
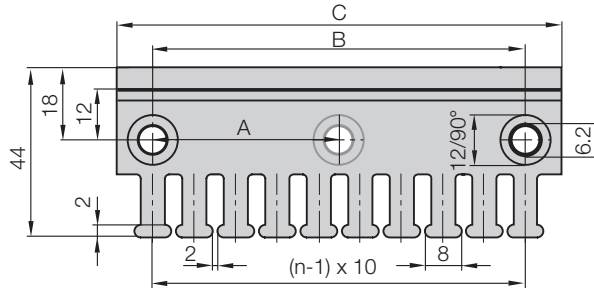
Single tiewrap plate



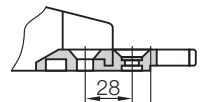
Shown assembled

Tiewrap plate	n Number of teeth	Dim. C [mm]	Dim. B [mm]	Center bore (- = no / + = yes)
2020.ZB	3	30	15	-
2030.ZB	4	40	20	-
2040.ZB	5	50	30	-
2050.ZB	6	60	40	-
2070.ZB	8	80	60	-
2090.ZB (= 2030.ZB + 2040.ZB)	9	90	-	-
2100.ZB	10	100	80	-
2125.ZB (= 2050.ZB + 2050.ZB)	12	120	-	-

Series 3000 - Tiewrap plate as single part



Single tiewrap plate



Shown assembled

Tiewrap plate	n Number of teeth	Dim. A [mm]	Dim. C [mm]	Dim. B [mm]	Center bore (- = no / + = yes)
3050.ZB	5	-	50	30	-
3075.ZB	7	-	75	55	-
3100.ZB	10	-	100	80	-
3115.ZB	11	-	115	95	-
3125.ZB	12	-	125	105	-
3150.ZB	15	-	150	130	-
3175.ZB	17	-	175	155	-
3200.ZB	20	90	200	180	+
3225.ZB	22	102,5	225	205	+
3250.ZB	25	115	250	230	+

Cable tiewraps as single part

Cable tiewraps (100-piece bag)	Width x length [mm]	Maximum Ø [mm]	Pull force resistance
CFB.001	4,8 x 150	36	222N

Phone +49- (0) 22 03-96 49-800
Fax +49- (0) 22 03-96 49-222

igus® GmbH
51147 Cologne

Internet: www.igus.eu
E-mail: info@igus.de

5.534



Available from stock. **Delivery in 24h or today!** (Delivery time means time until shipping of goods)