

Zipper | E-Chains® | Series 07

● ● ● Price index



Upon request: Cleanroom Class 1 (ISO class 3) tested by the Dryden Engineering Company, California



UL94-V2 classifications upon request



Low-noise



"Zipper-fast" opening and closing



When to use the Series 07:

- If fast, zipper-like accessibility to cables is required
- If quick, easy insertion of cables with preassembled connectors is required
- If quieter operation is required
- If aesthetic design is required
- At high acceleration and travel speed



When not to use it:

- If a cheaper, openable E-Chain® is required,
 - ▶ Series B07 E2 micro, page 5.30
- If cable installation without opening lids is possible
 - ▶ Series E06 Easy Chain®, page 3.20
- If a closed tube system is required
 - ▶ Series R07 Zipper, page 4.28

- ① "Zipper-fast" opening and closing
- ② Small pitch for low-noise, smooth operation
- ③ For high acceleration
- ④ Zipper lids can be separated and joined at each chain link
- ⑤ Light weight
- ⑥ Mounting bracket with integrated strain relief
- ⑦ Also available as "Zipper" E-Tube Series R07 ▶ page 4.28
- ⑧ Cheaper, openable E-Chain®, Series B07 E2 micro ▶ page 5.30



Order example complete E-Chain®

Please indicate chain-lengths or number of links Example: 1 m or 50 links

1 m 07.20.038.0



E-Chain®

1 set 060.20.12PZ



Mounting bracket

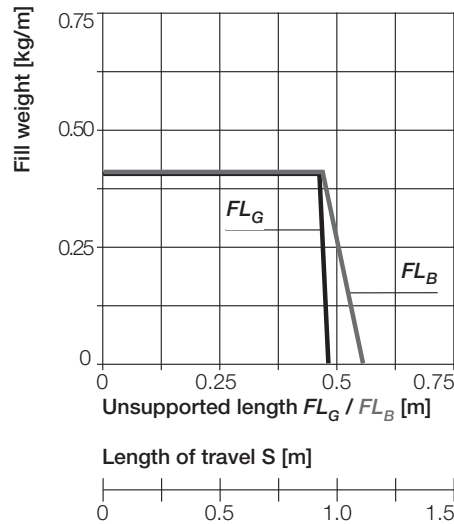
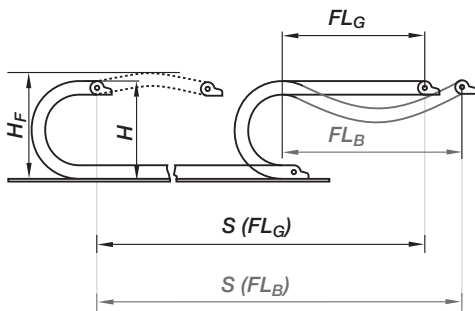


Unsupported length

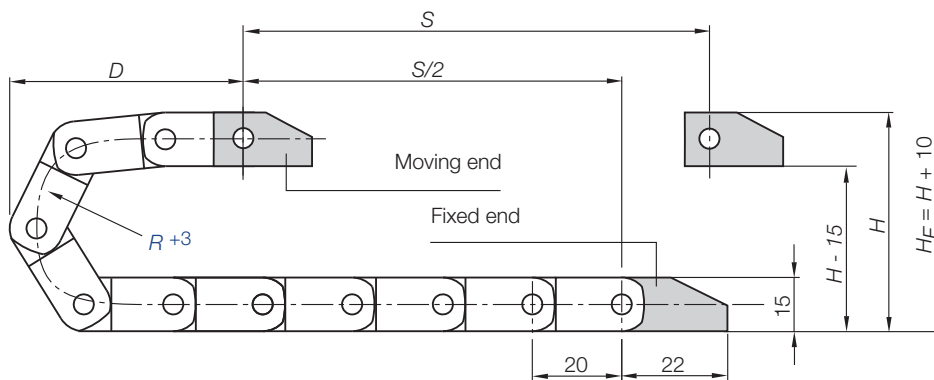
FL_G = with straight upper run

FL_B = with permitted sag

Further information ► **Design, page 1.12**



- S = Length of travel
- R = Bending radius
- H = Nominal clearance height
- H_F = Required clearance height
- D = Overlength E-Chain® radius in final position
- $K = \pi \cdot R + \text{"safety"}$



Short travels - unsupported

Unsupported E-Chains® feature positive camber over short travels. This must be accounted for when specifying the clearance height H_F . Please consult igus® if space is particularly restricted.

Pitch = 20 mm/link Links/m = 50 (1.000 mm) Chain length = $S/2 + K$

R	018	028	038
H	52	72	92
D	45	55	65
K	100	140	160

The required clearance height:
 $H_F = H + 10$ mm
 (with 0,2 kg/m fill weight)



Zipper E-Chains®
 Inner height: 10,3 mm

Phone +49- (0) 22 03-96 49-800
 Fax +49- (0) 22 03-96 49-222



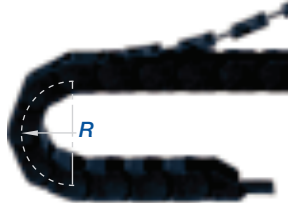
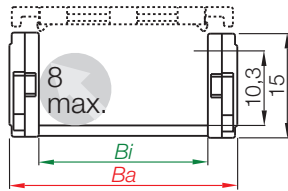
► page 4.5

Speed / acceleration FL_G	max. 20 [m/s] / max. 200 [m/s ²]
Speed / acceleration FL_B	max. 3 [m/s] / max. 6 [m/s ²]
Gliding speed / acceleration (maximum)	max. 10 [m/s] / max. 50 [m/s ²]
Material - permitted temperature °C	igumid G / -40° to +120° C
Flammability class, igumid G	VDE 0304 IIC UL94 HB

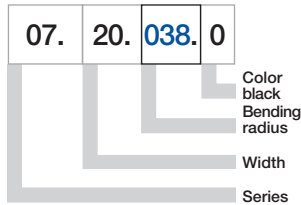
Technical Data



Details of material properties
 ► page 1.38



Part No. structure



Series 07 E-Chain® - zip-open along outer radius

Part No.	B_i [mm]	B_a [mm]	R [mm]	Bending Radii	Weight [kg/m]
07.06.□.0	06	12,5	018	028 038	≈ 0,13
07.10.□.0	10	16,5	018	028 038	≈ 0,14
07.16.□.0	16	22,5	018	028 038	≈ 0,16
07.20.□.0	20	27	018	028 038	≈ 0,17
07.30.□.0	30	37	018	028 038	≈ 0,20
07.40.□.0	40	47	018	028 038	≈ 0,23
07.50.□.0	50	57	018	028 038	≈ 0,26
07.64.□.0	64	71	018	028 038	≈ 0,30

Supplement part no. with required radius (R) Example: 07.20.□.038.0

0 = standard color, other colors ► page 1.39 · Pitch = 20 mm/link - Links/m = 50



Phone +49- (0) 22 03-96 49-800
Fax +49- (0) 22 03-96 49-222

igus® GmbH
51147 Cologne

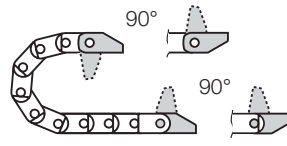
Internet: www.igus.eu
E-mail: info@igus.de



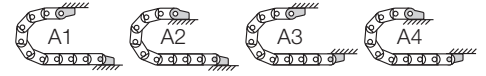
Polymer, one-piece

- One-piece mounting bracket
- Corrosion-resistant
- Available preassembled
- Inner and outer attachment possible
- Available with or without integrated strain relief tiwrap plates

Moving end with bore
(outer link) 060...1(PZ)



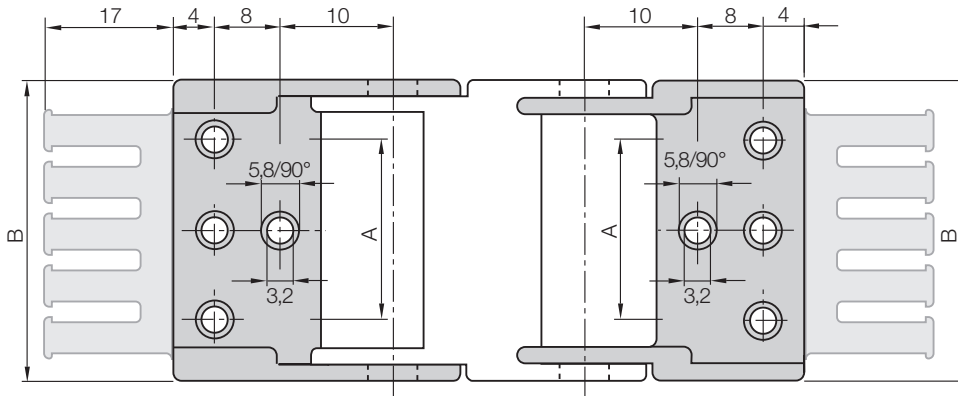
060...2(PZ) Fixed end
with pin (inner link)



Possible installation conditions for assembled mounting brackets ▶ Order example "preassembled" below

060...1(PZ)

Moving end



060...2(PZ)

Fixed end

Dimensions and order configurations

Strain relief is possible on the moving end and/or the fixed end.

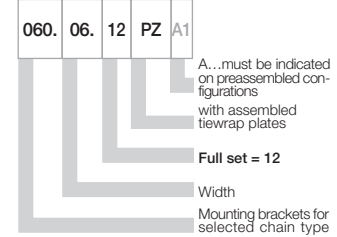
060.06.12 - 060.20.12: center bores only

060.30.12 - 060.64.12: outer bores only

For E-chain®	Part No. full set with tiwrap plate	Part No. full set without tiwrap plate	Number of teeth	Dim. A [mm]	Dim. B [mm]
07.06. ▶	060.06. 12 PZ	060.06. 12	1	-	12,5
07.10. ▶	060.10. 12 PZ	060.10. 12	1	-	16,5
07.16. ▶	060.16. 12 PZ	060.16. 12	2	-	22,5
07.20. ▶	060.20. 12 PZ	060.20. 12	2	-	27,0
07.30. ▶	060.30. 12 PZ	060.30. 12	3	22	37,0
07.40. ▶	060.40. 12 PZ	060.40. 12	4	32	47,0
07.50. ▶	060.50. 12 PZ	060.50. 12	5	42	57,0
07.64. ▶	060.64. 12 PZ	060.64. 12	6	56	71,0

For the preassembled mode please add the index A1 ... A4 Example: 060.06. 12 PZ A1

Part No. structure



Full set, for both ends:

060.06. 12 PZ +tiwrap plate

Single-part order:

060.06. 1 PZ +tiwrap plate

Mounting bracket with bore

060.06. 2 PZ +tiwrap plate

Mounting bracket with pin

Phone +49- (0) 22 03-96 49-800
Fax +49- (0) 22 03-96 49-222



Quicksnap - the complete, detachable mounting unit, available upon request



Quickfix - mounting bracket with dowel, available upon request

Additional Features