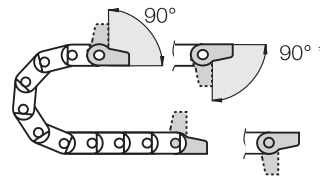




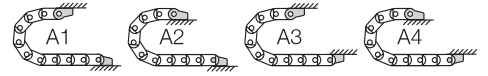
Polymer, one-piece

- One-piece mounting bracket
- Corrosion-resistant
- Available preassembled
- Inner and outer attachment possible
- Available with integrated strain relief tiewrap plates
- 90° * not for Series Z16

Moving end with bore
(outer link) 117...1P(Z)

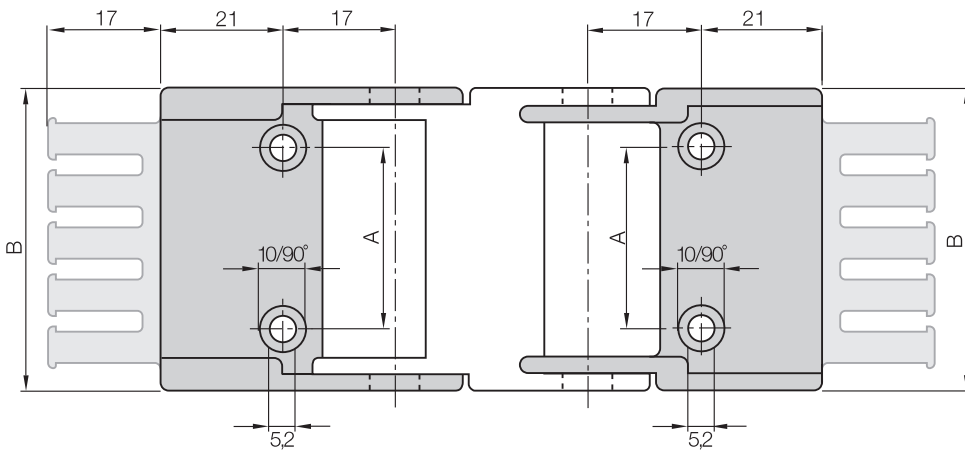


117...2P(Z) Fixed end
with pin (inner link)



Possible installation conditions for assembled mounting brackets ▶ Order example "preassembled" below

117...1P(Z)
Moving end

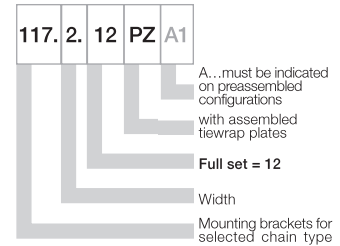


117...2P(Z)
Fixed end

Dimensions and order configurations

Strain relief is possible on the moving end and/or the fixed end.

Part No. structure



Full set, for both ends:

117. 2. 12 PZ +tiewrap plate

Single-part order:

117. 2. 1 PZ +tiewrap plate

Mounting bracket with bore

117. 2. 2 PZ +tiewrap plate

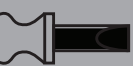
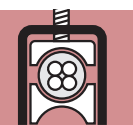
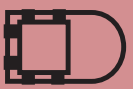
Mounting bracket with pin

For E-Chain®	Part No. full set with tiewrap plate	Part No. full set without tiewrap plate	Number of teeth	Dim. A [mm]	Dim. B [mm]
E16-Z16.2. ▶	117. 2. 12PZ	117. 2. 12P	3	12	35,5
E16-Z16.3. ▶	117. 3. 12PZ	117. 3. 12P	4	25	48,5
E16-Z16.4. ▶	117. 4. 12PZ	117. 4. 12P	5	37	60,5
E16-Z16.5. ▶	117. 5. 12PZ	117. 5. 12P	6	48	76,0
E16-Z16.6. ▶	117. 6. 12PZ	117. 6. 12P	8	65	93,0
E16-Z16.7. ▶	117. 7. 12PZ	117. 7. 12P	10	85	113,0

Please add the Part No. with the requested index - e.g. 117. 2. 12PZ

For the preassembled mode please add the index A1 ... A4 e.g. 117. 2. 12PZ A1

Phone +49- (0) 22 03-96 49-800
Fax +49- (0) 22 03-96 49-222



Quicksnap - the complete, detachable mounting unit, available upon request



Quickfix - mounting bracket with dowel, available upon request

Additional Features