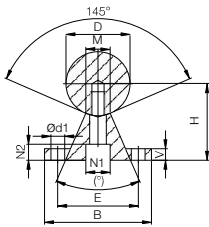
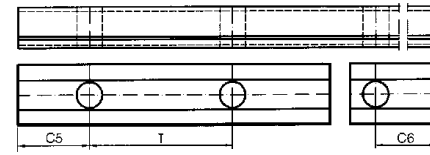
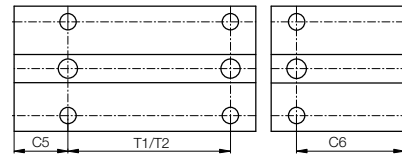
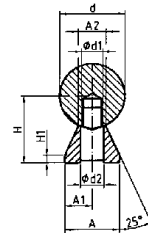


EWUM



EWUMN



Dimensions [mm] – supported stainless steel shafts 1.4125

Part No.	D	B	H	V	N1	N2	d1	M	E	T1 ⁸⁷⁾	C5/C6		T2	C5/C6		Weight	
											min.	max.		min.	max.		[kg/m]
			±0.02							±0.15	for T1	Standard	Standard				
EWUM-12	12	40	22	5	8.0	5.0	4.5	5.8	50	29	75	20	57	120	20	79	1.75
EWUM-16	16	45	26	5	9.5	6.0	5.5	7.0	50	33	100	20	69	150	20	94	2.64
EWUM-20	20	52	32	6	11.0	6.5	6.6	8.3	50	37	100	20	69	150	20	94	3.97
EWUM-25	25	57	36	6	14.0	8.5	6.6	10.8	50	42	120	20	79	200	20	119	5.65
EWUM-30	30	69	42	7	17.0	10.5	9.0	11.0	50	51	150	20	94	200	20	119	7.93
EWUM-40	40	73	50	8	17.0	10.5	9.0	15.0	50	55	200	20	119	300	20	169	12.88
EWUM-50	50	84	60	9	19.0	12.5	11.0	19.0	46	63	200	20	119	300	20	169	19.60

⁸⁷⁾ Pitch T1 on request; standard is T2

Dimensions [mm] – low level supported stainless steel shafts 1.4125

Part No.	d	H	H1	A	A1	A2	d1	d2	T	C5/C6		Weight
										min.	max.	
		±0.02				±0.02						
EWUMN-12	12	14.5	3	11	5.5	5.4	M4	4.5	75	20	57	1.62
EWUMN-16	16	18	3	14	7.0	7.0	M5	5.5	75	20	57	2.54
EWUMN-20	20	22	3	17	8.5	8.1	M6	6.6	75	20	57	3.81
EWUMN-25	25	26	3	21	10.5	10.3	M8	9.0	75	20	57	5.62
EWUMN-30	30	30	3	23	11.5	11.0	M10	11.0	100	20	69.5	7.63
EWUMN-40	40	39	4	30	15.0	15.0	M12	13.5	100	20	69.5	13.47
EWUMN-50	50	46	5	35	17.5	19.0	M14	15.5	100	20	69.5	20.31

Low level supported shafts are delivered unmounted.



Order example:

EWUMN-16-500 corresponds to a low level supported stainless steel shaft (1.4125) 16 mm Ø, with length of 500 mm



Order key

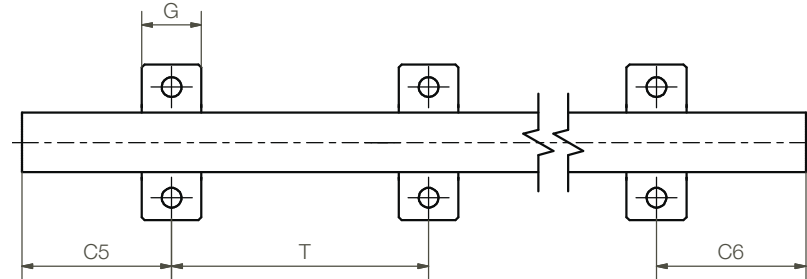
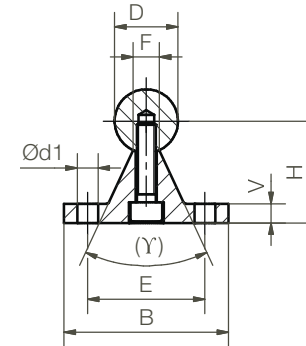
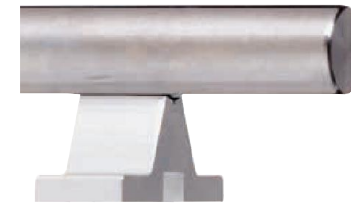
Type Size Options

EWUM-ES-20-2000

Partially supported
stainless steel shafts,
metric

Outer-Ø

Shaft length [mm]
(Hole pattern)



Shaft support blocks for Ø 20 mm
made from stainless steel VA

- Connecting dimensions as standard supports made from aluminium

Available materials and shafts:

1.4125, max. 6.000 mm ► EWUM

1.4571, max. 3.000 mm ► EWUMS

Dimensions [mm]

Part No.	Shaft		D	B	H	V	d1	E	γ	F	G	T	C5/C6		T	C5/C6	
	material	h6											for EW...ES			for EW...ES -T1	
	EWUM	EWUMS											min.	max.		min.	max.
EWUM(S)-ES-12 / ...-T1	1.4125	1.4571	12	40	22	5	4.5	29	-	5.8	14	120	20	79	75	20	57
EWUM(S)-ES-16 / ...-T1	1.4125	1.4571	16	45	26	5	5.5	33	-	7.0	16	150	20	94	100	20	69
EWUM(S)-ES-20 / ...-T1	1.4125	1.4571	20	52	32	6	6.6	37	50°	8.3	20	150	20	94	100	20	69
EWUM(S)-ES-25 / ...-T1	1.4125	1.4571	25	57	36	6	6.6	42	-	10.8	25	200	20	119	150	20	79
EWUM(S)-ES-30 / ...-T1	1.4125	1.4571	30	69	42	7	9.0	51	-	11.0	25	200	20	119	150	20	94
EWUM(S)-ES-40 / ...-T1	1.4125	1.4571	40	73	50	8	9.0	55	-	15.0	25	300	20	169	200	20	119



Order example:

EWUM-ES-20-500 for a partially supported stainless steel shaft, outer Ø 20 mm with length of 500 mm