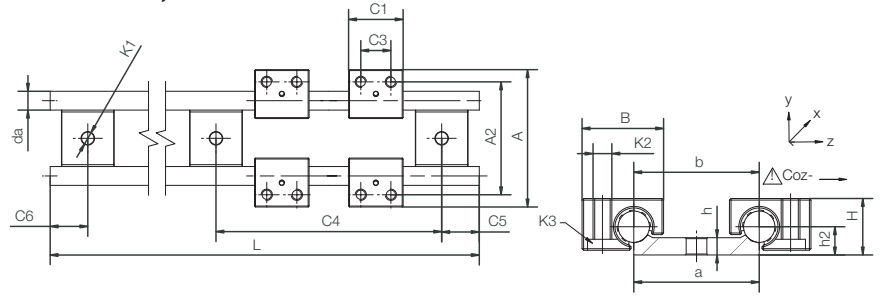




# DryLin® W | Stainless steel linear slide system V4A

## 2 Dimensions Ø: 10, 20 mm

DryLin® W



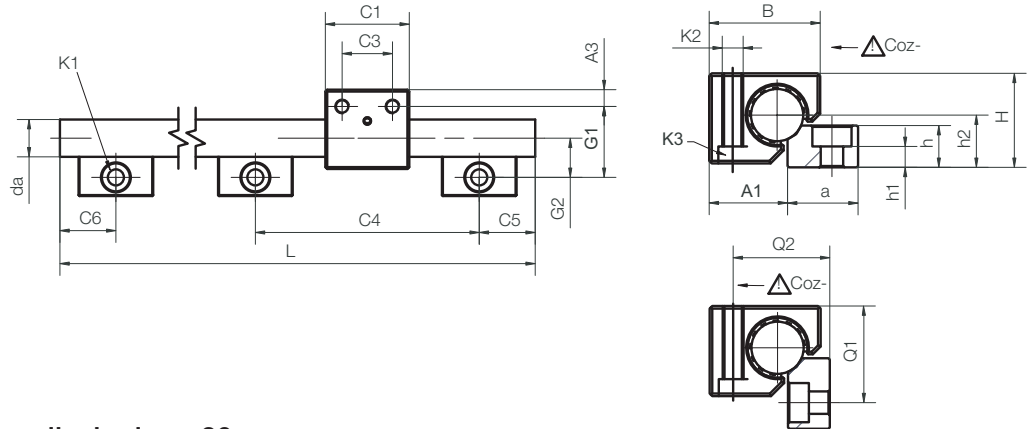
### DryLin® W Guide rail, double, Ø 10 mm

Part No.	Suitable bearing [Part No.]	Weight [kg/m]	da h9 [mm]	L Max. [mm]	a -0,3 [mm]	b [mm]	h [mm]	h2 [mm]
WS-10-40-ES-FG	WJUM-01-10-ES-FG	1,58	10	3000	40	40	5,5	9
Part No.	C4 [mm]	C5 Min. Max. [mm]	C5 Max. [mm]	C6 Min. Max. [mm]	C6 Max. [mm]	K1 for screw DIN 912		
WS-10-40-ES-FG	120	20	79,5	20	79,5	M6		

### DryLin® W housing bearings

Part No.	Weight [g]	H ± 0,07 [mm]	B [mm]	C1 [mm]	C3 [mm]	A [mm]	A2 [mm]	K2 [mm]	K3 [mm]	Static load capacity		
										Countersunk Coy [N]	Coz+ [N]	Coz- [N]
WJUM-01-10-ES-FG*	57	18	26	29	16	73	60	M6	M5	3800	3800	950

\* XUM-01-10 liners are optional extra, page 64.10, for high temperatures



### DryLin® W-Guide rail, single, Ø 20 mm

Part No.	Suitable bearing [Part No.]	Weight [kg/m]	da h9 [mm]	L Max. [mm]	a -0,3 [mm]	h [mm]	h2 [mm]	G2 [mm]			
WS-20-ES-FG	WJUM-01-20-ES-FG	3,37	20	3000	27	16	20	21			
Part No.	C4 [mm]	C5 Min. Max. [mm]	C5 Max. [mm]	C6 Min. Max. [mm]	C6 Max. [mm]	K1 for screw DIN 912	h1 [mm]	ly [mm <sup>4</sup> ]	lz [mm <sup>4</sup> ]	Wby [mm <sup>3</sup> ]	Wbz [mm <sup>3</sup> ]
WS-20-ES-FG	120	20	79,5	20	79,5	M8	8	7854	7854	785	785

### DryLin® W housing bearings

Part No.	Weight [g]	H ± 0,07 [mm]	B [mm]	C1 [mm]	C3 [mm]	G1 [mm]	A3 [mm]	A1 [mm]	K2 [mm]	K3 [mm]	Q1 [mm]	Q2 [mm]	Static load capacity		
													Countersunk- Coy [N]	Coz+ [N]	Coz- [N]
WJUM-01-20-ES-FG*	280	36	42,5	45	27	38	9	30	M8	M6	37	37	11000	11000	1900

\* XUMO-01-20 liners are optional extra, page 64.10, for high temperatures

Phone +49 - 22 03 - 96 49-145  
Fax +49 - 22 03 - 96 49-334

igus® GmbH  
51147 Cologne

Internet [www.igus.de](http://www.igus.de)  
E-mail [info@igus.de](mailto:info@igus.de)