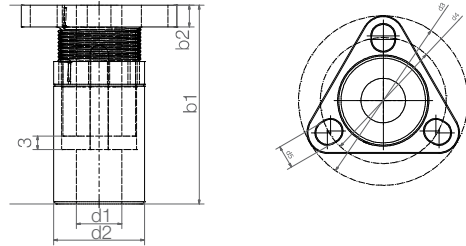


Zero backlash, for life-long minimum backlash made from iglidur® J




Order key

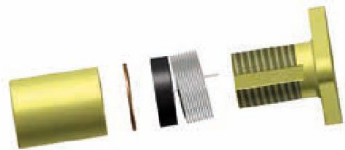
Part number	Type	Thread
DST-JFRM-ZB-0001-DS10x12		
dryspin® technology	igidur® J	
Form F	Right-hand thread	
Metric	Zero backlash	
	Type 0001	
	Thread type	
	Thread Ø [mm]	
	Pitch P [mm]	

Dimensions [mm]

Thread	d1	d2	d3	d4	d5	b1 ⁴⁰⁾	b2	Part No.
Ds6.35x2.54	6.35	13.5	28	22.2	3.7	31-36	4.1	DST-JFRM-ZB-0001-DS6.35x2.54
Ds6.35x25.4	6.35	13.5	28	22.2	3.7	31-36	4.1	DST-JFRM-ZB-0001-DS6.35x25.4
Ds10x12	10	20	38.1	28.3	5.2	41-47	4.8	DST-JFRM-ZB-0001-DS10X12
Ds10x25	10	20	38.1	28.3	5.2	41-47	4.8	DST-JFRM-ZB-0001-DS10X25
Ds10x50	10	20	38.1	28.3	5.2	41-47	4.8	DST-JFRM-ZB-0001-DS10X50

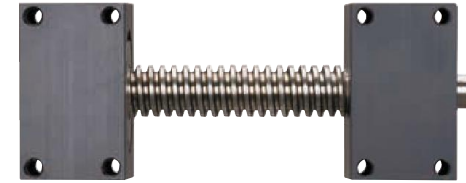
⁴⁰⁾ Variable according to thread pitch / clearance

 Installation instructions and video tutorials
► www.igus.eu/zero-backlash



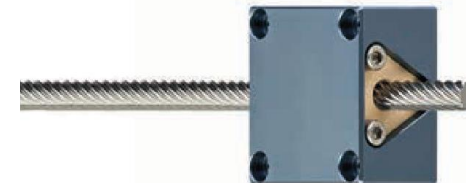
Accessories for dryspin® technology

igus® offers a large design kit for dryspin® lead screw units. Bearing housing for lead screws and lead screw nuts enable the design of an individual linear table. With drylin® E NEMA lead screw motors, dryspin® combines the highest precision with a longer service life.



Lead screw support blocks

- Lead screw support block including clamping rings and lubrication-free plain bearings
- Material: aluminium anodised
- Fixed and floating bearing version available
- www.igus.eu/SLS
- Page 1042



Lead screw nut housing

- Universal support for dryspin® flange lead screw nut
- Material: aluminium anodised
- Available individually or completely pre-assembled
- www.igus.eu/SD-MH
- Page 1044



drylin® E lead screw motor with dryspin® technologie

- NEMA 11/17/23 stepper motors
- Direct centring of the dryspin® lead screw for highest precision
- Many combination options
- www.igus.eu/dryspin-motor
- Page 1060



Special components

- Special machined lead screw which can be configured online
- Custom machining nuts/lead screw on request