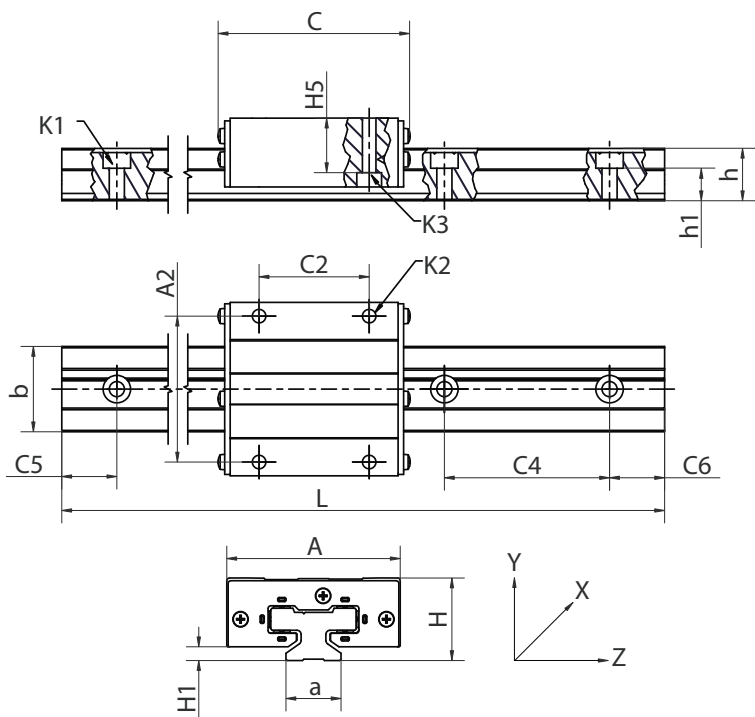


DryLin® T



- Linear guide carriage for extreme conditions (dirt, glue resins, chippings, mud, etc.)
- iglidur® J polymer sliding pads are fixed by the metal end plates and cannot be lost
- Dimensions equivalent to the TW-01 design and standard recirculating ball bearings.

## DryLin® T Guide Rails

Part No.	Weight [kg/m]	L [mm]	a [mm]	C4 [mm]	C5		C6 [mm]	C6 [mm]	h [mm]	h1 [mm]	K1 for Screw DIN 912	b [mm]	ly [mm²]	lz [mm²]	Wby [mm³]	Wbz [mm³]
					Min.	Max.										
TS-01-20	1,0	4000	20	60	20	49	20	49	19,0	12,3	M 5	31	22570	11520	1456	1067
TS-01-25	1,3	4000	23	60	20	49	20	49	21,5	13,8	M 6	34	34700	19300	2041	1608
TS-01-30	1,9	4000	28	80	20	59	20	59	26,0	15,8	M 8	40	70040	40780	3502	2832

Order example: TS-01-20, 2000 for a guide rail TS-01-20 of 2 m length

For rails without mounting holes, please use part number suffix "without mounting hole"

## DryLin® T Heavy Duty – Guide carriages

Part No.	Weight [kg]	H ± 0,35 [mm]	H5 [mm]	A [mm]	C [mm]	A2 [mm]	C2 [mm]	H1 ± 0,35 [mm]	K2 [mm]	K3 [mm]
TW-02-25	0,29	36	24,8	70	77	57	45	5,0	M8	M6
TW-02-30	0,50	42	27,0	90	92	72	52	6,5	M10	M8

Floating bearing on request

## DryLin® TK-02 Complete system



Structure – part no.

TK	-02	-20	-2	,500
----	-----	-----	----	------



This order example (TW-02-20-2,500) corresponds to a complete DryLin® T HeavyDuty system of size 20 with 2 carriages 500 mm rail length.

Order TW-02-20-2, 500, LLY for a complete system with floating bearing in y-direction.

Phone +49 - 22 03 - 96 49-145  
Fax +49 - 22 03 - 96 49-334

igus® GmbH  
51147 Cologne

Internet [www.igus.de](http://www.igus.de)  
E-mail [info@igus.de](mailto:info@igus.de)