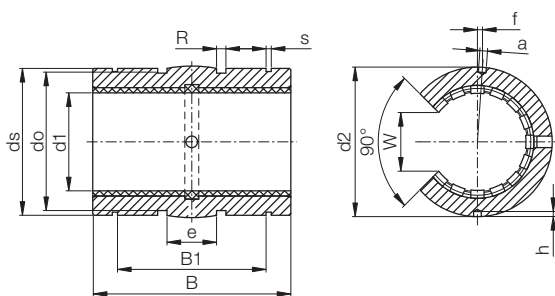




DryLin® R | Linear Plain Bearing OJUM-03 | mm



Structure – part no.
O J U M-03-12

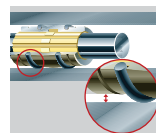


mm

DryLin® R

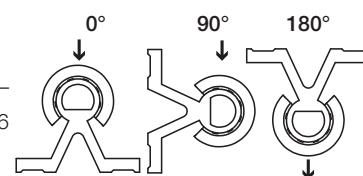
Special properties

- Closed aluminium housing with
 - reduced outer diameter
 - spherical area on the outer diameter
- For misalignment compensation
 - O-rings for elastic seating
 - hard anodized
- Dimensions correspond to standard recirculating ball bearings
- Fitted with JUMO-01 liner made of iglidur® J
- Recommended housing bore H7
- Recommended tolerance for the shaft: h6–h10 (see igus® supported shafts ► Page 65.3)
- Secured by set screws (not included in delivery)
- Also available with following liners: → XUMO-01: for high temperatures, material iglidur® X – Ex.: OXUM-03-16 → JUMO-11: with reduced max. clearance, material iglidur® J – Ex.: OJUM-13-16



* According to igus® testing method
► Page 64.37

Available from stock



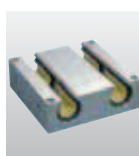
Inner Diameter, Load Capacity and Weight

Part No.	Shaft Ø [mm]	Housing Bore Ø H7 [mm]	Tolerance* Bearing Inner Diameter [mm]	pmax. [N] Dynamic Load P = 5 MPa			pmax. [N] Static Load P = 35 MPa			Weight [g]
				0°	90°	180°	0°	90°	180°	
				OJUM-03-10	10	19	0,030 - 0,088	725	500	
OJUM-03-12	12	22	0,030 - 0,088	960	635	240	6720	4445	1680	13
OJUM-03-16	16	26	0,030 - 0,088	1440	990	396	10080	6943	2772	19
OJUM-03-20	20	32	0,030 - 0,091	2250	1800	900	15750	12600	6300	38
OJUM-03-25	25	40	0,030 - 0,091	3625	2953	1523	25375	20670	10658	63
OJUM-03-30	30	47	0,040 - 0,110	5100	4250	2278	35700	29735	15946	119
OJUM-03-40	40	62	0,040 - 0,115	8000	6810	3800	56000	47660	26600	250
OJUM-03-50	50	75	0,050 - 0,130	12500	10750	6125	87500	75265	42875	431

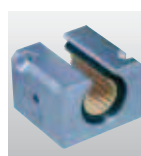
Dimensions [mm]

Part No.	d1 [mm]	d2 [mm]	ds [mm]	e [mm]	o [mm]	do [mm]	B1 [mm]	s [mm]	B [mm]	R [mm]	W [mm]	a [mm]	f ±0,2	h -0,5
OJUM-03-10	10	18,8	18,5	5,0	1,86	15,4	21,8	1,30	28,9	13,0	7,3	0,0	0	1,2
OJUM-03-12	12	21,8	21,5	6,0	1,86	18,4	22,8	1,30	31,9	18,0	9,0	3,0	1,33 (7°)	1,2
OJUM-03-16	16	25,8	25,5	8,0	2,86	20,4	24,9	1,30	35,9	32,0	11,6	2,2	0	1,2
OJUM-03-20	20	31,8	31,5	10,0	2,86	26,4	31,5	1,60	44,8	50,0	12,0	2,2	0	1,2
OJUM-03-25	25	39,8	39,0	12,5	2,86	34,4	44,1	1,85	57,8	39,0	14,5	3,0	-1,5 (-4,3°)	1,5
OJUM-03-30	30	46,7	46,0	15,0	2,86	41,4	52,1	1,85	67,8	57,0	16,6	3,0	2 (4,9°)	2
OJUM-03-40	40	61,7	61,0	20,0	2,86	56,4	60,9	2,15	79,8	100,0	21,0	3,0	1,5 (2,8°)	2
OJUM-03-50	50	74,7	74,0	25,0	2,86	69,4	78,0	2,65	99,8	157,0	25,5	5,0	2,5 (3,8°)	2

Plain bearings of series OJUM-03 can be combined with:



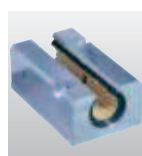
OQA-03:
► P. 64.37



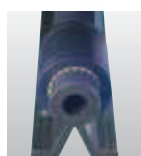
OGA-03:
► P. 64.43



OGAS-03:
► P. 64.45



OTA-03:
► P. 64.41



AWMU:
► P. 65.5

Phone +49 - 22 03 - 96 49-145
Fax +49 - 22 03 - 96 49-334

igus® GmbH
51147 Cologne

Internet www.igus.de
E-mail info@igus.de

64.30

Lifetime calculation, CAD files and much more support ► www.igus.de/en/DryLinR