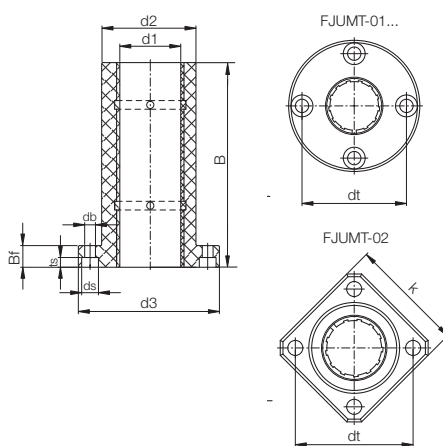




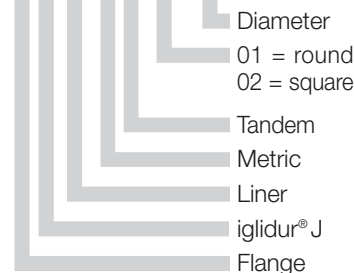
DryLin® R | Tandem Flange FJUMT-01/02 | mm



FJUMT-01... FJUMT-02...



Structure – part no.
FJUMT-01-12



mm

DryLin® R

Phone +49 - 22 03 - 96 49-145
Fax +49 - 22 03 - 96 49-334

iglus® GmbH
51147 Cologne

Internet www.igus.de
E-mail info@igus.de

64.36

Special properties

- Flange housing made of anodized aluminium, round flange/square flange
- 2 x liner JUM-02 made of iglidur® J are fitted as standard
- Recommended tolerance for the shaft: h6-h10 (see iglus® shafts ► **chapter 65**)
- Also available with following liners:
 - XUM-01: for high temperatures, material iglidur® X – Example: FXUMT-01-16
 - JUM-11: with reduced maximum clearance, material iglidur® J – Example: FJUMT-11-16

* According to iglus®
testing method
► **Page 64.37**

**FJZMT-01/02-08 are fitted
with 2 pieces of JSM-0810-16

Available from stock

Flange length and effective surface area

Part No.	Dimension Nominal Diameter [mm]	Tolerance* Bearing Inner Diameter [mm]	Flange length FJUMT-01/02-.. [mm]	Effective surface area FJUMT-01/02-.. [mm ²]
FJZMT- <input type="checkbox"/> -08**	08	0,032 - 0,070	45	256
FJUMT- <input type="checkbox"/> -10	10	0,030 - 0,088	52	250
FJUMT- <input type="checkbox"/> -12	12	0,030 - 0,088	57	324
FJUMT- <input type="checkbox"/> -16	16	0,030 - 0,088	70	464
FJUMT- <input type="checkbox"/> -20	20	0,030 - 0,091	80	580
FJUMT- <input type="checkbox"/> -25	25	0,030 - 0,091	112	975
FJUMT- <input type="checkbox"/> -30	30	0,030 - 0,110	123	1470
FJUMT- <input type="checkbox"/> -40	40	0,030 - 0,115	151	2360
FJUMT- <input type="checkbox"/> -50	50	0,030 - 0,130	192	3450

Please insert: **01** for round flange ● or
02 for square flange ◆

Dimensions [mm]

Part No.	d1 [mm]	d2 [mm]	d3 [mm]	dt [mm]	k [mm]	B [mm]	Bf [mm]	ts [mm]	db [mm]	ds [mm]
FJZMT- <input type="checkbox"/> -08**	8	16	32	24	25	45	8	3,1	3,5	6,0
FJUMT- <input type="checkbox"/> -10	10	19	39	29	30	52	9	4,1	4,5	7,5
FJUMT- <input type="checkbox"/> -12	12	22	42	32	32	57	9	4,1	4,5	7,5
FJUMT- <input type="checkbox"/> -16	16	26	46	36	35	70	9	4,1	4,5	7,5
FJUMT- <input type="checkbox"/> -20	20	32	54	43	42	80	11	5,1	5,5	9,0
FJUMT- <input type="checkbox"/> -25	25	40	62	51	50	112	11	5,1	5,5	9,0
FJUMT- <input type="checkbox"/> -30	30	47	76	62	60	123	14	6,1	6,6	11,0
FJUMT- <input type="checkbox"/> -40	40	62	98	80	75	151	18	8,1	9,0	14,0
FJUMT- <input type="checkbox"/> -50	50	75	112	94	88	192	18	8,1	9,0	14,0

Please insert: **01** for round flange ● or
02 for square flange ◆

Lifetime calculation, CAD files and much more support ► www.igus.de/en/DryLinR