



Size 40

Compared with smaller series, NW 40 is able to withstand significantly higher loads. The slides of this range come with threaded bores. Like all other DryLin® N series, the lubrication free design is capable of running at high linear speeds.

- Rail width 40 mm
- Low weight
- Flat installation height
- High speed
- iglidur® J plain bearing material

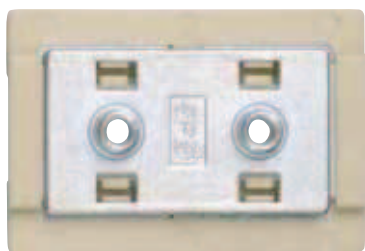
DryLin® N

Phone +49 - 22 03 - 96 49-145
Fax +49 - 22 03 - 96 49-334

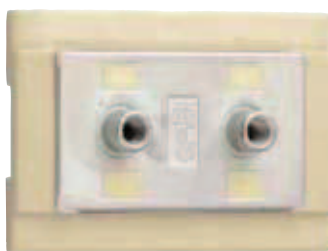
igus® GmbH
51147 Cologne

Internet www.igus.de
E-mail info@igus.de

62.12



Standard 02 with thread



overmoulded with thread



Standard 01 with mounting hole

Structure of the Part No. for assembled systems:

NK -02 -40 -02 -500 LLZ C5 = 20

Assembled System

Type of carriage

- 01 with mounting hole
- 02 with thread
- 12 with thread, overmoulded

Size

40 = 40 mm rail width

No. of carriages

Length of rail in mm

Carriage options

- Leave blank: Standard
- LLZ: Floating z-direction
- LLY: Floating y-direction
- LLYZ: Floating y- and z-direction

Rail options

- Leave blank: Standard with holes
- UNGEBOHRT: Without holes
- C5 = ... mm: If hole spacing is not symmetrical



DryLin® NK-01/02-40 | Low-Profile Linear Guide



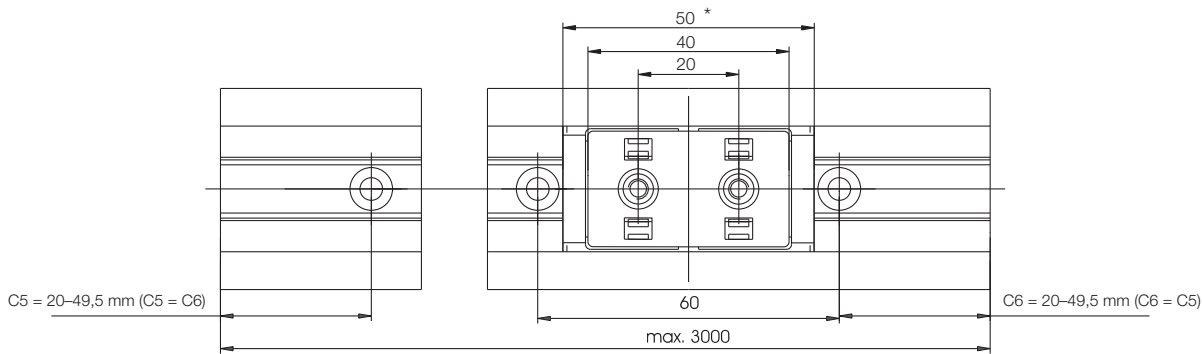
Data, version 01:

Part No. carriage	NW-01-40
Part No. rail	NS-01-40
Rail weight	450 g/m
Carriage weight	30 g
Max. rail length	3000 mm
Standard bore pattern symmetrical (C5 = C6)	



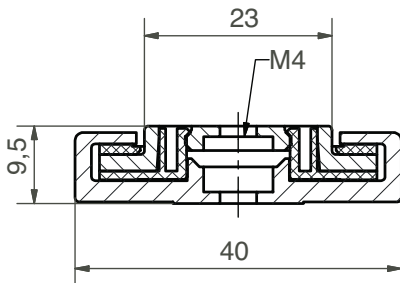
Data, version 02:

Part No. carriage	NW-02-40
Part No. rail	NS-01-40
Rail weight	450 g/m
Carriage weight	30 g
Max. rail length	3000 mm
Standard bore pattern symmetrical (C5 = C6)	

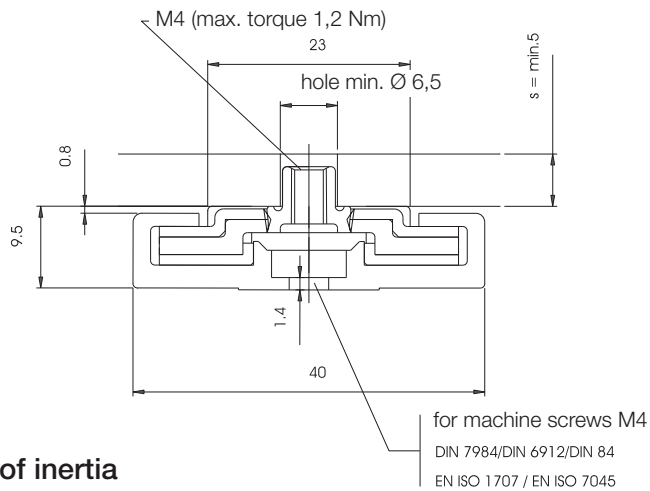


* Carriage length of version NW-12-40: 52 mm

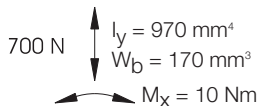
NW-01-40



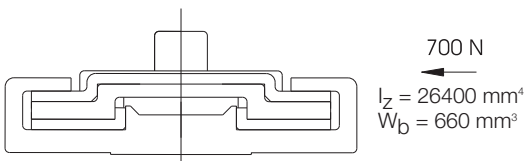
NW-02-40



Static load-bearing and geometric moment of inertia



$M_y = 6 \text{ Nm}$
 $M_z = 6 \text{ Nm}$



For rails without mounting holes, please use part number suffix "UNGEBOHRT".

Order example: NK-02-40-2, 500



More details on part no. options: ► Page 62.4

Option:

Polymer end cap for rail,
Part No. NSK-40



DryLin® N

Phone +49 - 22 03 - 96 49-145
Fax +49 - 22 03 - 96 49-334

