

ZLW-0630 – Belt drive axis



The drylin® ZLW-0630 toothed belt axis is the ideal solution for easy adjustment and positioning tasks in confined spaces. The installation height is only 31 mm. The stroke length is variable (maximum 1,000 mm). drylin® ZLW-0630 is available in the “Basic 02” and “Standard 02” type series.

ZLW-1040 – Belt drive axis



The drylin® ZLW-1040 toothed belt axis is the ideal solution for many positioning tasks. The installation height is only 45 mm. The stroke length is variable (maximum 1,000 mm). The carriage is available in 3 lengths. drylin® ZLW-1040 is available in the “Basic 02” and “Standard 02” type series.

New: ZLW-1080 – Belt drive axis

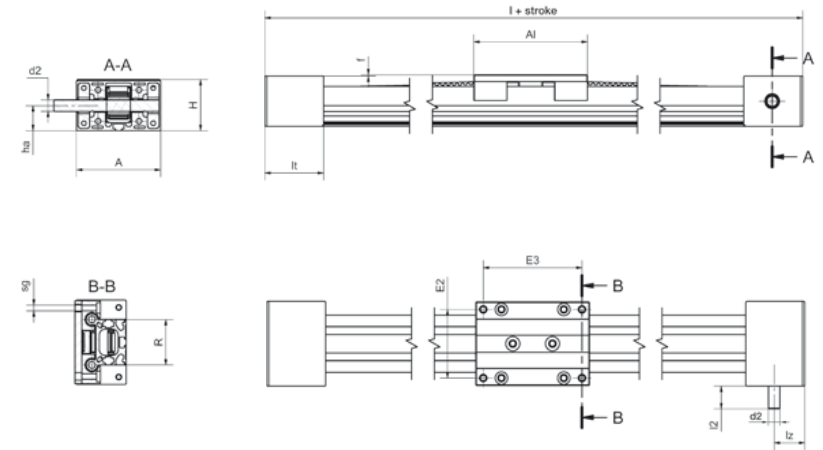


The broad profile of the drylin® timing belt axis ZLW-1080 is characterised by a high torque support. In this way, the axis is suited for portal structures as well as for applications with off-centre centre of gravity. The drylin® ZLW-1080 is the standard version 02 with carriages in three lengths.

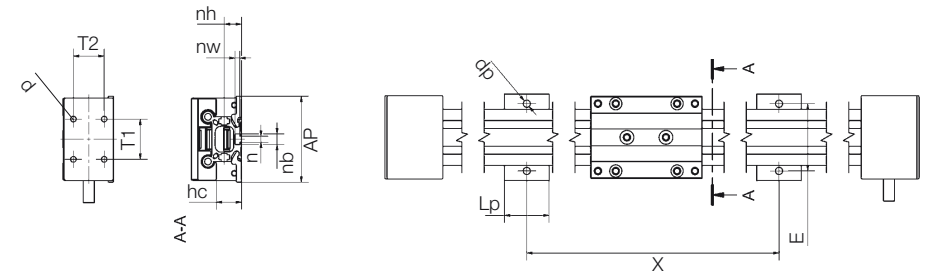
ZLW-1660 – Belt drive axis



The toothed belt axis drylin® ZLW-1660 is the ideal solution for easy adjustment and positioning functions in restricted space conditions and expands the product range of drylin® ZLW belt drive axes by an additional size. The installation height is only 45 mm. The stroke length can be chosen freely (Max. 3,000 mm). The carriage is available in 3 type series. drylin® ZLW-1660 is available in the “Standard 02” type series.



Connecting dimensions



Dimensions [mm]

Bestellnummer	A	Al	H	E2	E3	I	R	f	lt	sg	ha	hc	lz	l2	d2
	-0.3			±0.15	±0.15		±0.15		±0.3						h9
ZLW-0630-02-...	54	60	31	45	51	144	30	3	42	M4	14	22.5	22	20	8
ZLW-1040-02-...	74	100	45	60	87	204	40	1	52	M6	22	22.5	27	20	10
ZLW-1080-02-... New!	107	100	45	94	87	204	74	1	52	M6	22	22.5	27	20	10
ZLW-1660-02-...	104	100	72	86	82	252	60	2	76	M8	43	22.5	38	20	14

Connecting dimensions [mm]

Bestellnummer	X	E	AP	Lp	dp	n	nb	nw	nh	T1	T2	d
		±0.2	-1.0							±0.25	±0.25	
ZLW-0630-02-...	variable	40	52	15	5.5	-	-	-	7	20	21	3.2
ZLW-1040-02-...	variable	60	78	40	6.4	5.2	9.5	4.3	15.5	36	26.5	5.0
ZLW-1080-02-... New!	variable	94	111	40	6.4	5.2	9.5	4.36	15.5	-	-	-
ZLW-1660-02-...	variable	100	122	40	9	10	15.4	13	27.6	65	60	M5

* Basic version: 6 mm square, plastic adapter for pin diameter 10 mm included



Order key
complete ▶ page 1226



▶ page 1227