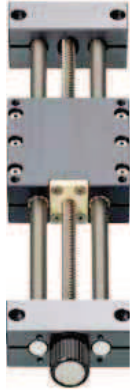


SHT-BB – Linear modules with ball-bearing lead screw supports



- Higher speeds
- Higher precision
- Less axial clearance
- Belt drive permits radial loads
- Constant torque
- Zero-Backlash function available for sizes 08 and 12
- Many accessories ► page 1203
- Lead screw nuts are available separately ► page 1096

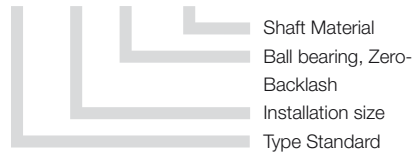
Order key
complete ► page 1172

SHT-BB-12-AWM



Order key
complete ► page 1172

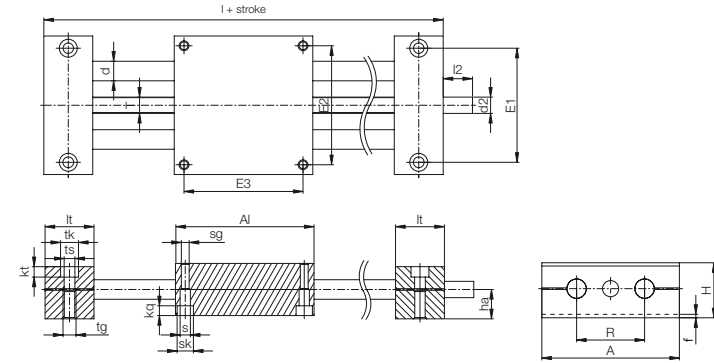
SHT-08-ZB-AWM



► page 1227

Technical Data

Part number	Max. length of stroke [mm]	Aluminum shaft		Steel shaft		Max. static load-bearing capacity	
		Weight [kg]	Additional (per 100 mm) [kg]	Weight [kg]	Additional (per 100 mm) [kg]	axial [N]	radial [N]
SHT-08-ZB-AWM New!	300	0.205	0.05	0.228	0.103	100	400
SHT-08-ZB-AWM-6.35x12.7 New!	300	0.205	0.05	0.228	0.103	100	400
SHT-BB-12-AWM	500	1.1	0.1	1.3	0.2	350	1,400
SHT-12-ZB-AWM-10x12 New!	500	1.1	0.1	1.3	0.2	150	600
SHT-BB-20-AWM	900	3.2	0.3	3.9	0.6	1,000	4,000
SHT-BB-30-AWM	1,000	8.6	0.6	10.9	1.4	1,500	6,000



Dimensions [mm]

Part number	A	AI	H	E1	E2	E3	I	R	f	lt	tk	ts
	-0.3	-0.3		±0.15	±0.15	±0.15				±0.1		
SHT-08-ZB-AWM New!	65	65	23	52	55	55	96	32	1.5	15.5	10	5.5
SHT-08-ZB-AWM-6.35x12,7 New!	65	65	23	52	55	55	96	32	1.5	15.5	10	5.5
SHT-BB-12-AWM	85	85	34	70	73	73	145	42	2	30	11	6.6
SHT-12-ZB-AWM-10x12 New!	85	85	34	70	73	73	145	42	2	30	11	6.6
SHT-BB-20-AWM	130	130	48	108	115	115	202	72	2	36	15	9.0
SHT-BB-30-AWM	180	180	68	150	158	158	280	96	4	50	20	13.5

Part number	tg	kt	s	sk	sg	kq	d	T	l2	d2	ha
		±0.1								Standard	
SHT-08-ZB-AWM New!	M6	7	4.2	8	M5	4.6	8	TR6x2	17	TR6x2*	13
SHT-08-ZB-AWM-6.35x12,7 New!	M6	7	4.2	8	M5	4.6	8	6.35x12.7	17	6.35*	13
SHT-BB-12-AWM	M8	6.4	6.3	10	M6	6.0	12	TR10x2	17	TR10x2*	18
SHT-12-ZB-AWM-10x12 New!	M8	6.4	6.3	10	M6	6	-	10x12	17	10x12*	18
SHT-BB-20-AWM	M10	8.6	6.4	11	M8	7.0	20	TR18x4	26	12h9	23
SHT-BB-30-AWM	M16	12.6	11.0	18	M12	10.6	30	TR24x5	38	14h9	36

* TR10x2 lead screw end unmachined