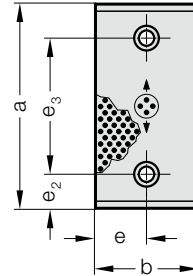


# SLIDING PAD, BRONZE WITH SOLID LUBRICANT

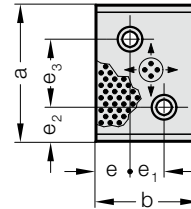


2960.85.

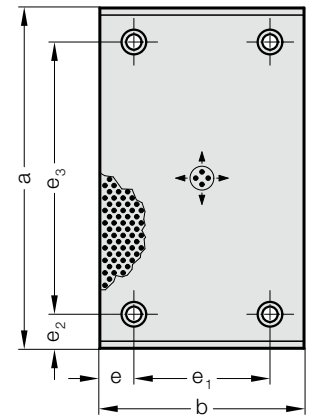
A



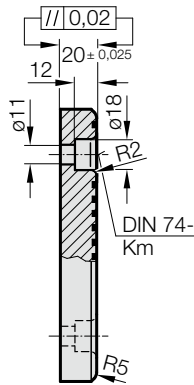
B



C



2960.85.



2960.85. Sliding pad, Bronze with solid lubricant

Order No	Shape	b	a	e	e <sub>1</sub>	e <sub>2</sub>	e <sub>3</sub>	Number of screw holes
2960.85.028.075	A	28	75	14	-	15	45	2
2960.85.028.100	A	28	100	14	-	25	50	2
2960.85.028.125	A	28	125	14	-	25	75	2
2960.85.028.150	A	28	150	14	-	25	100	2
2960.85.038.075	A	38	75	19	-	15	45	2
2960.85.038.100	A	38	100	19	-	25	50	2
2960.85.038.125	A	38	125	19	-	25	75	2
2960.85.038.150	A	38	150	19	-	25	100	2
2960.85.038.200	A	38	200	19	-	25	150	2
2960.85.048.075	A	48	75	24	-	15	45	2
2960.85.048.100	A	48	100	24	-	25	50	2
2960.85.048.125	A	48	125	24	-	25	75	2
2960.85.048.150	A	48	150	24	-	25	100	2
2960.85.048.200	A	48	200	24	-	25	150	2
2960.85.058.075	A	58	75	29	-	15	45	2
2960.85.058.100	A	58	100	29	-	25	50	2
2960.85.058.150	A	58	150	29	-	25	100	2
2960.85.075.075.1	A	75	75	37.5	-	15	45	2
2960.85.075.075	B	75	75	25	25	25	25	2
2960.85.075.100.1	A	75	100	37.5	-	25	50	2
2960.85.075.100	B	75	100	25	25	25	50	2
2960.85.075.125	A	75	125	37.5	-	25	75	2
2960.85.075.150	A	75	150	37.5	-	25	100	2
2960.85.075.200	A	75	200	37.5	-	25	150	2
2960.85.100.100	C	100	100	25	50	25	50	4
2960.85.100.125	C	100	125	25	50	25	75	4
2960.85.100.150	C	100	150	25	50	25	100	4
2960.85.100.200	C	100	200	25	50	25	150	4
2960.85.100.250	C	100	250	25	50	25	200	4
2960.85.100.300	C	100	300	25	50	25	250	4
2960.85.125.125	C	125	125	37.5	50	25	75	4
2960.85.125.150	C	125	150	37.5	50	25	100	4
2960.85.125.200	C	125	200	37.5	50	25	150	4
2960.85.125.250	C	125	250	37.5	50	25	200	4
2960.85.125.300	C	125	300	37.5	50	25	250	4
2960.85.125.350	C	125	350	37.5	50	25	300	4
2960.85.150.150	C	150	150	25	100	25	100	4
2960.85.150.200	C	150	200	25	100	25	150	4
2960.85.150.250	C	150	250	25	100	25	200	4
2960.85.150.300	C	150	300	25	100	25	250	4
2960.85.200.200	C	200	200	25	150	25	150	4
2960.85.200.250	C	200	250	25	150	25	200	4
2960.85.200.300	C	200	300	25	150	25	250	4

**Material:**

Bronze with solid lubricant, oilless lubricating

**Note:**

Screws are not included.

**Fixing:**

Use socket cap screws DIN EN ISO 4762 M10.