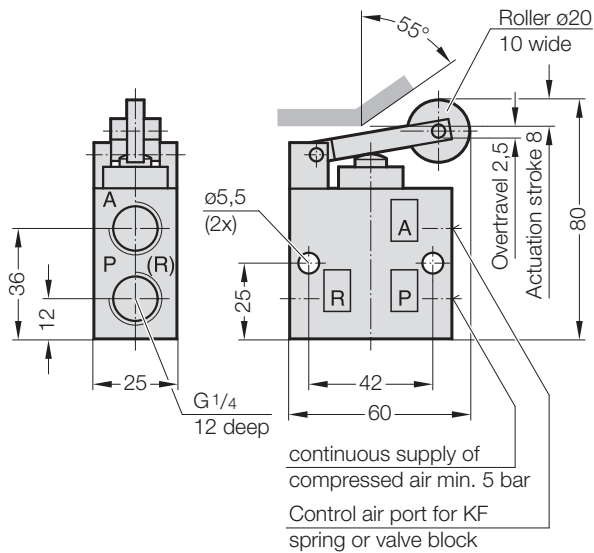


CONTROLLABLE GAS SPRINGS

PRESSURE SWITCHES ET ACCESSORIES

2489.00.42

Pressure switch



TECHNICAL DATA:

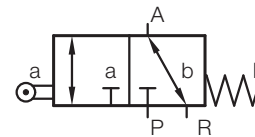
Aluminium casing

Min. permitted pressure pe 0 bar

Rated pressure pe 10 bar

Ambient temperature 80 °C

PRESSURE SWITCH WITH SENSING ROLLER 3/2 WAY VALVE NG 6 (G 1/4) MECHANICAL



2489.00.42.01

Muffler for pressure switch

