

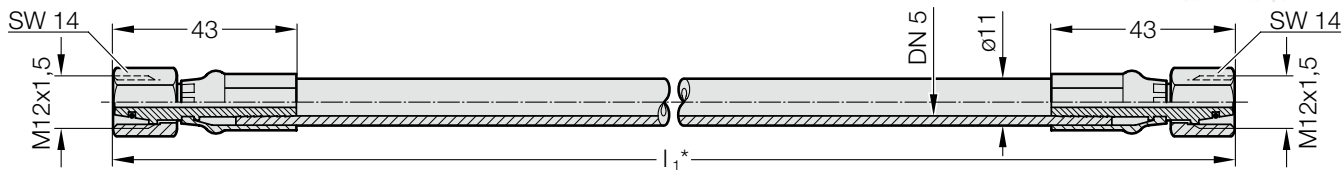
# GAS SPRING ACCESSORIES

## 24°-CONE CONNECTION HOSES

### (DIN 2353 / DIN EN ISO 8434-1)

2480.00.25.01.

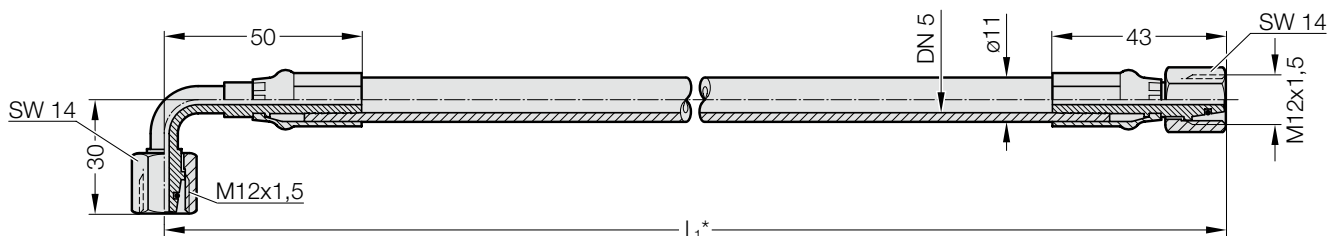
Hose – conical seals with union nuts and O-Ring (straight/straight)



Dimension  $l_1$  specified in the order, e.g. 765 mm gives order no. 2480.00.25.01.0765

2480.00.25.02.

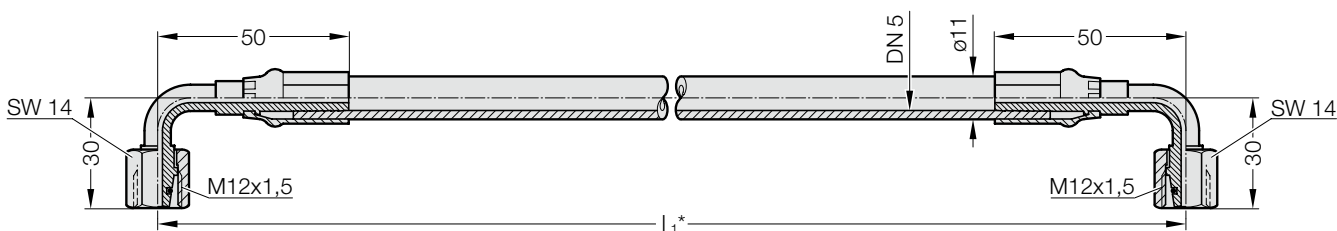
Hose – conical seals with union nuts an O-Ring (90° bend/straight)



Dimension  $l_1$  specified in the order, e.g. 765 mm gives order no. 2480.00.25.02.0765

2480.00.25.03.

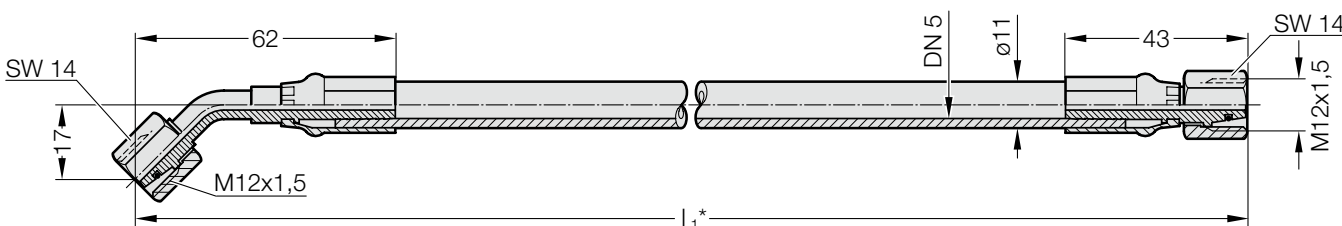
Hose – conical seals with union nuts and O-Ring (90° bend/both ends)



Dimension  $l_1$  specified in the order, e.g. 765 mm gives order no. 2480.00.25.03.0765

2480.00.25.04.

Hose – conical seals with union nuts and O-Ring (45° bend/straight)



Dimension  $l_1$  specified in the order, e.g. 765 mm gives order no. 2480.00.25.04.0765

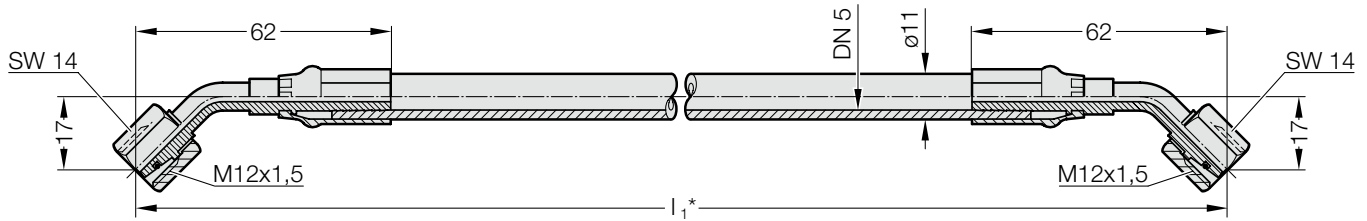
# GAS SPRING ACCESSORIES

## 24°-CONE CONNECTION HOSES

### (DIN 2353 / DIN EN ISO 8434-1)

2480.00.25.05.

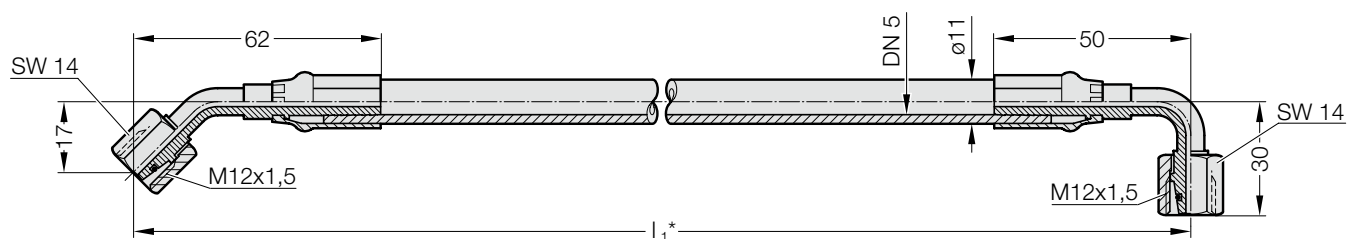
Hose – conical seals with union nuts and O-Ring (45° bend/both ends)



Dimension  $l_1$  specified in the order, e.g. 765 mm gives order no. 2480.00.25.05.0765

2480.00.25.06.

Hose – conical seals with union nuts and O-Ring (45° bend/ 90° bend)



Dimension  $l_1$  specified in the order, e.g. 765 mm gives order no. 2480.00.25.06.0765

#### Order example:

Shortest factory length: 140 mm  
Minimum bending radius: R40

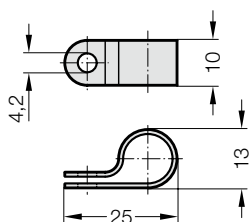
\*24°-cone connection hoses available in the following lengths:

- 5 mm step range  $\leq$  1000 mm
- 10 mm step range  $>$  1000 mm
- 100 mm step range  $>$  4000 mm
- 500 mm step range  $>$  6000 mm

2480.00.25.12.01



Hose clamp  
for gauging hose DN5 ( $\varnothing$ 11 mm)



**Material:**

Polyamide

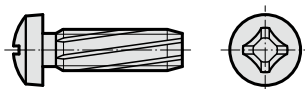
**Note:**

Supplied without screws

2192.50.04.012



Self-tapping screw DIN 7516  
M4x12



**Note:**

self-tapping  
Diameter of hole for self-tapping  
screw = 3.6 mm

2480.00.23.13.

Anti-scuff spiral  
for subsequent installation over hoses and tubing



Order No.	l [m]
2480.00.23.13.0001	1
2480.00.23.13.0002	2
2480.00.23.13.0005	5
2480.00.23.13.0010	10

Inner $\varnothing$	7 mm max.
For hose external $\varnothing$	5-11 mm
Temperature range	-30°C up to +100°C

**Description:**

The anti-scuff spiral is used to protect against abrasion, is resistant to air, water, oil, hydraulic fluids petrol and other liquids.

**Material:**

Polyamide