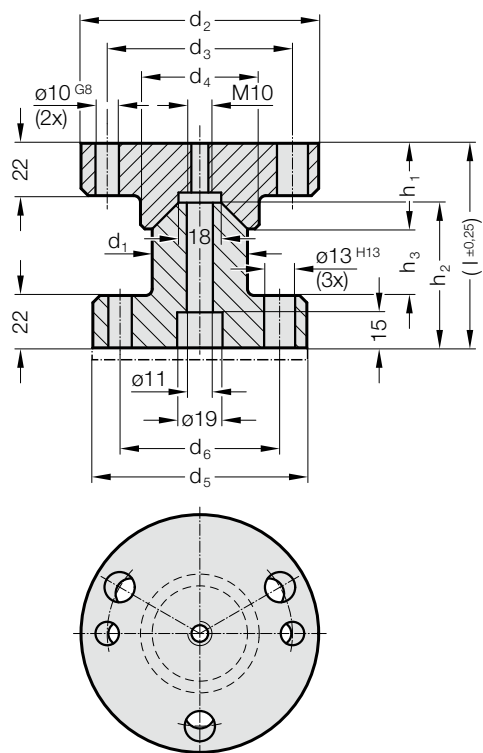


CENTERING UNIT, CNOMO

2441.13.



Material:

16MnCr5, heat treated

Conical surfaces induction hardened

Surface hardness: 60 + 4 HRC, Hardness penetration 1,0 + 0,5 mm

Note:

Order No for centring unit to CNOMO with adjusting washer: 2441.13.0.

Screws and pins are not included.

2441.13. Centering unit, CNOMO

Order No	d ₁	d ₂	d ₃	d ₄	d ₅	d ₆	h ₁	h ₂	h ₃	l
2441.13.040	40	100	79	50	90	67	36	61	28	86
2441.13.060	60	125	104	70	110	89	46	61	18	86